

The Pontbren Experience

Lessons for farm woodland creation in Wales

ICF Study Tour October 2014

Dr. Sophie Wynne-Jones
Aberystwyth University

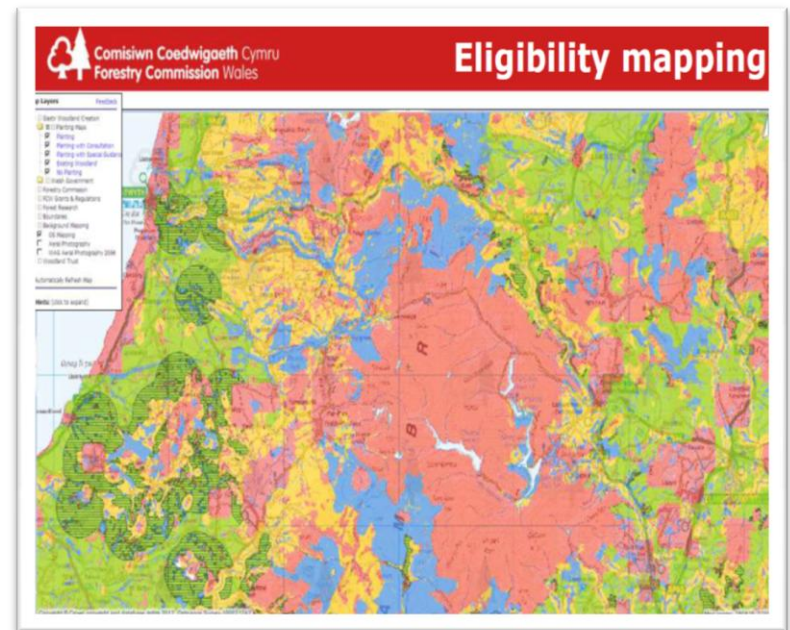
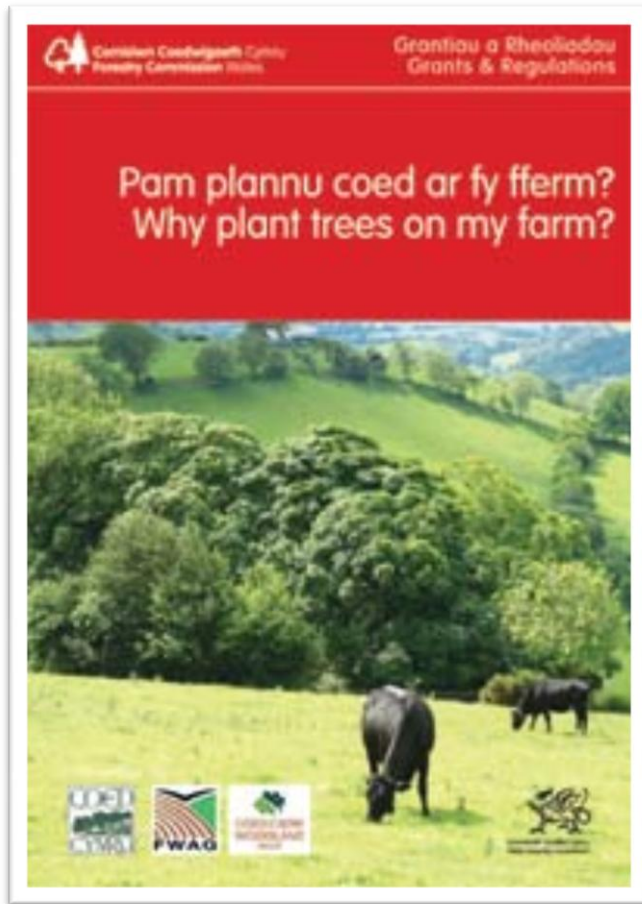


The Challenge

“Most of the planned increase in woodland cover in Wales is likely to come from new woodlands on farmland, providing important ecosystem services, such as water management, habitat creation, timber production, and local sources of fuel.”

(Welsh Government, 2009. *Woodlands for Wales*).

Glastir Woodland Creation



Farmers' Decision Making

- AES uptake is a business decision
- *But* decisions are not just about economic priority
- Needs to work with farming practise

<http://www.walesruralobservatory.org.uk/our-publications>

IWA Recommendation #4:

Farmers are more likely to embark on tree planting if they can be persuaded that it can be integrated into their overall farming culture and practice, rather than as a separate activity.



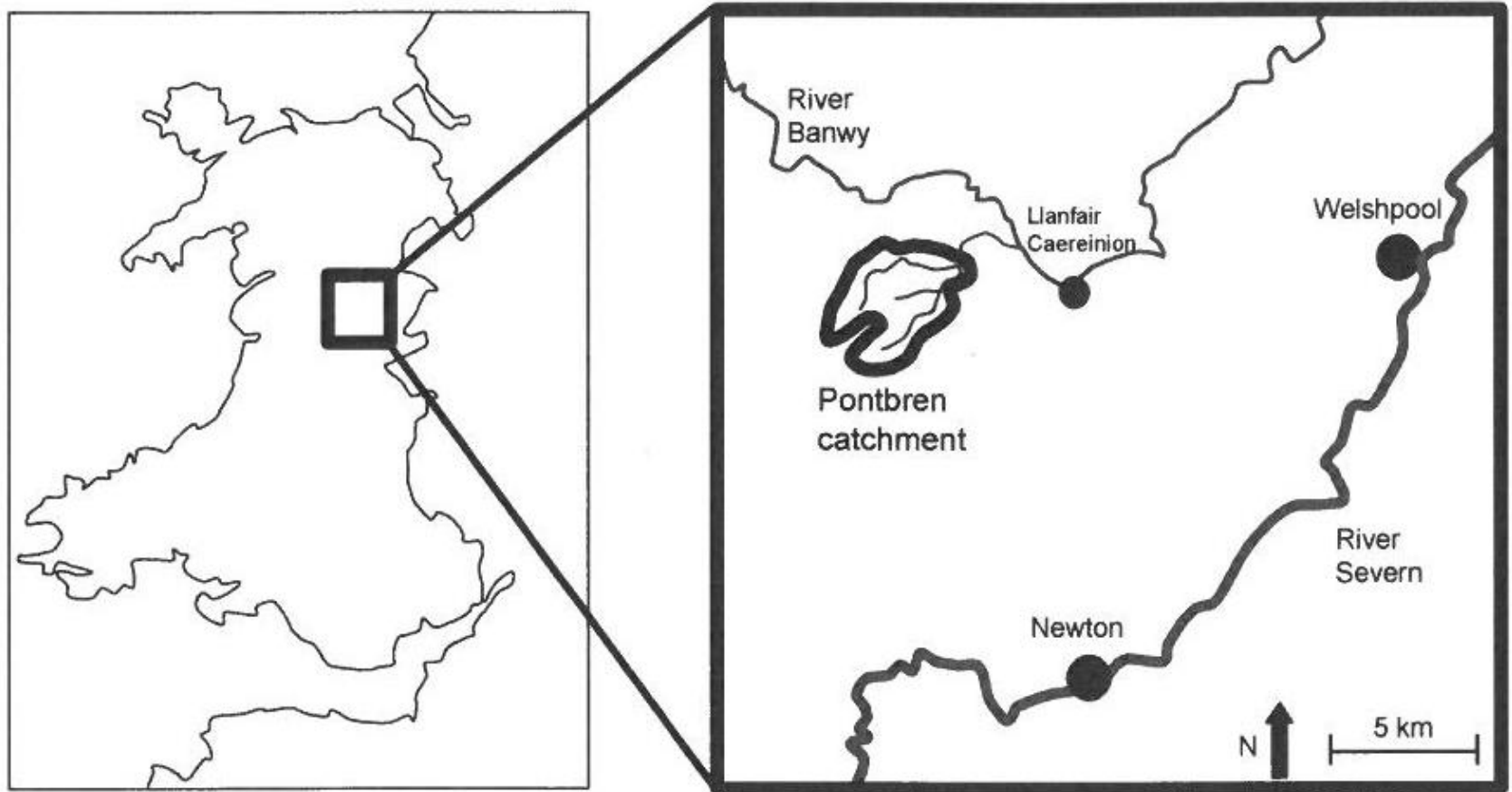


Pontbren Project

- **Farmer-led**
- Restoring shelter and habitat
- Added-value wood products
- Lower input, more resilient farming systems



Pontbren



(FRMRC 2008 p8)

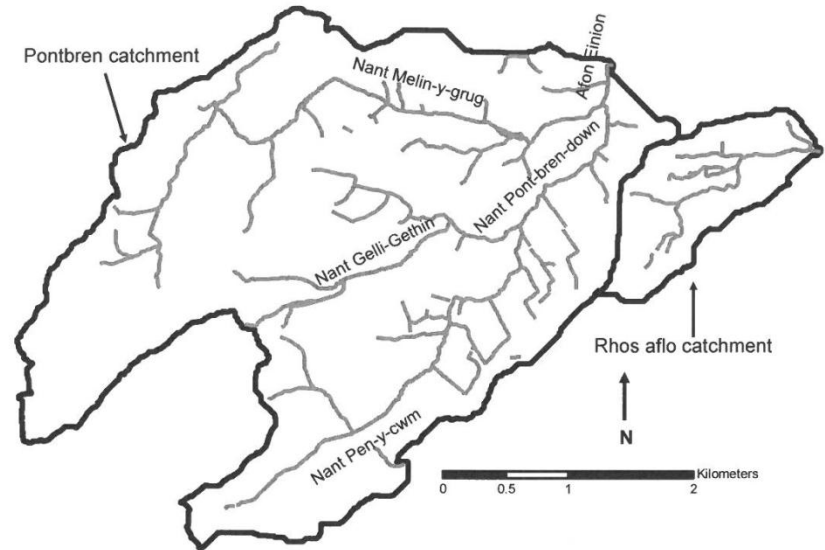
Pontbren Project

1997 First planting on 3 farms

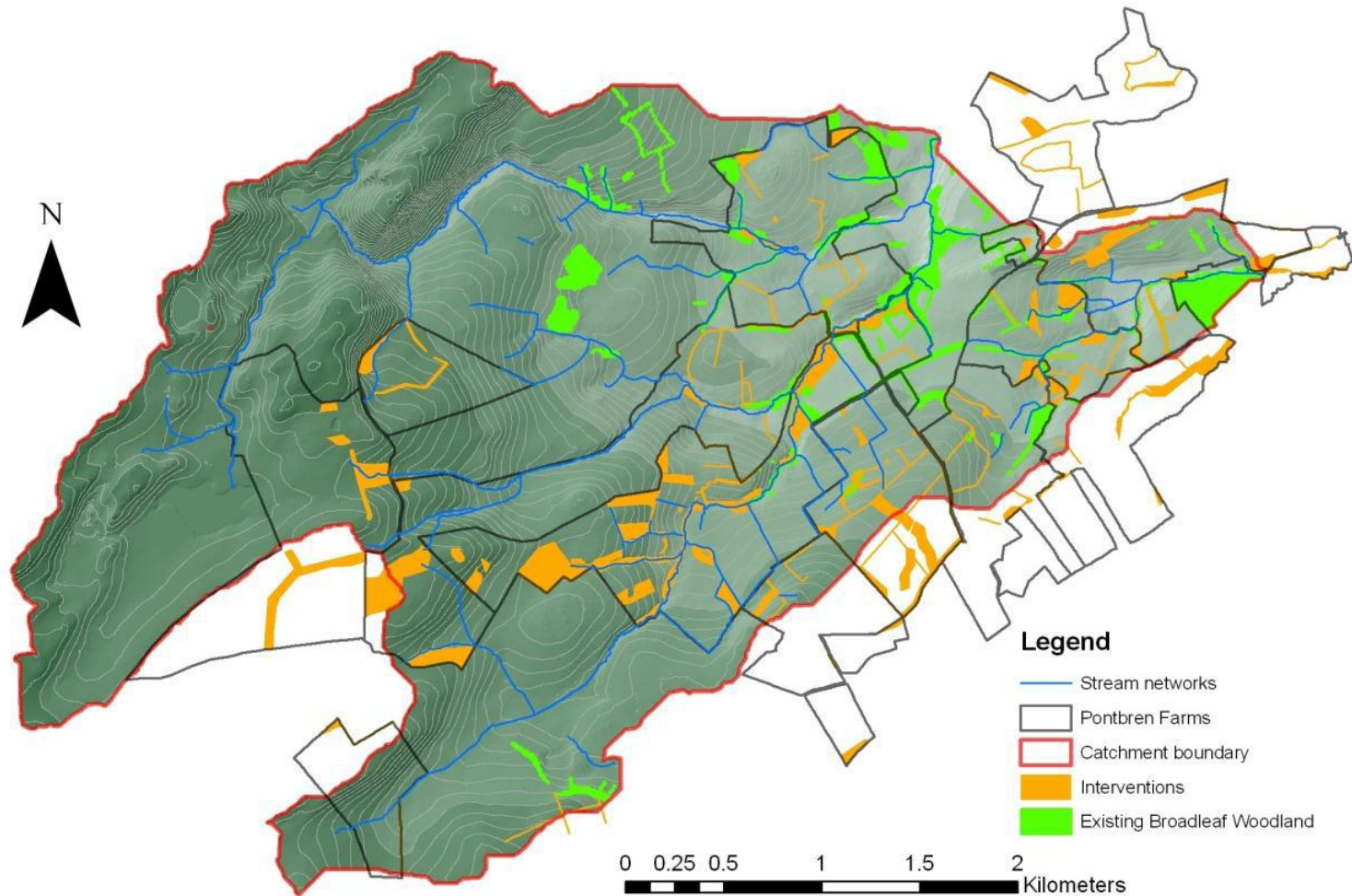
2001 Group formed

2003 Enfys Funding
– Planting & hedging

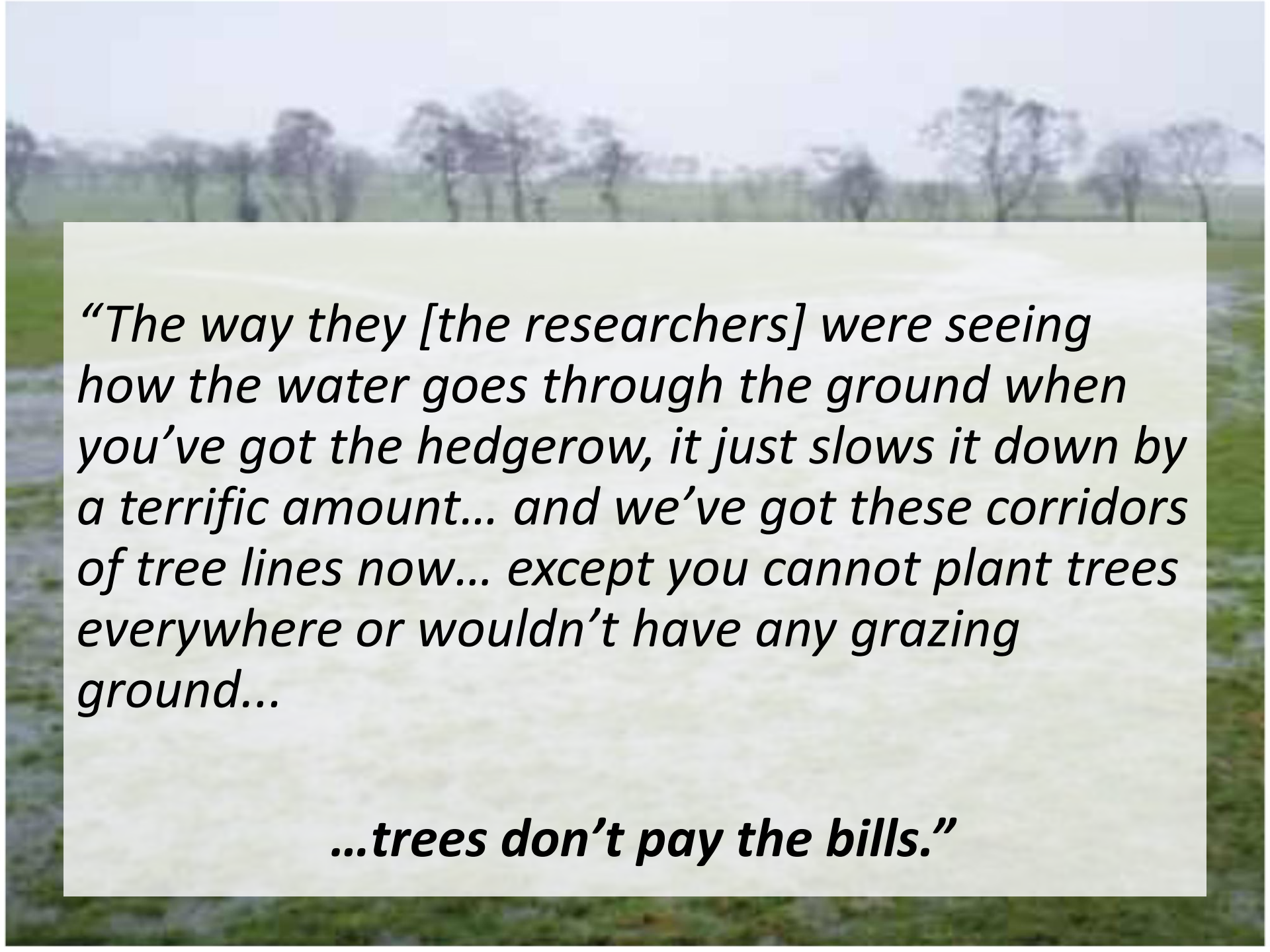
2002-12 WG Funding
– Destocking
– Woodland payments



Pontbren Interventions



(Pagella 2011 fig2.4, p40)



“The way they [the researchers] were seeing how the water goes through the ground when you’ve got the hedgerow, it just slows it down by a terrific amount... and we’ve got these corridors of tree lines now... except you cannot plant trees everywhere or wouldn’t have any grazing ground...”

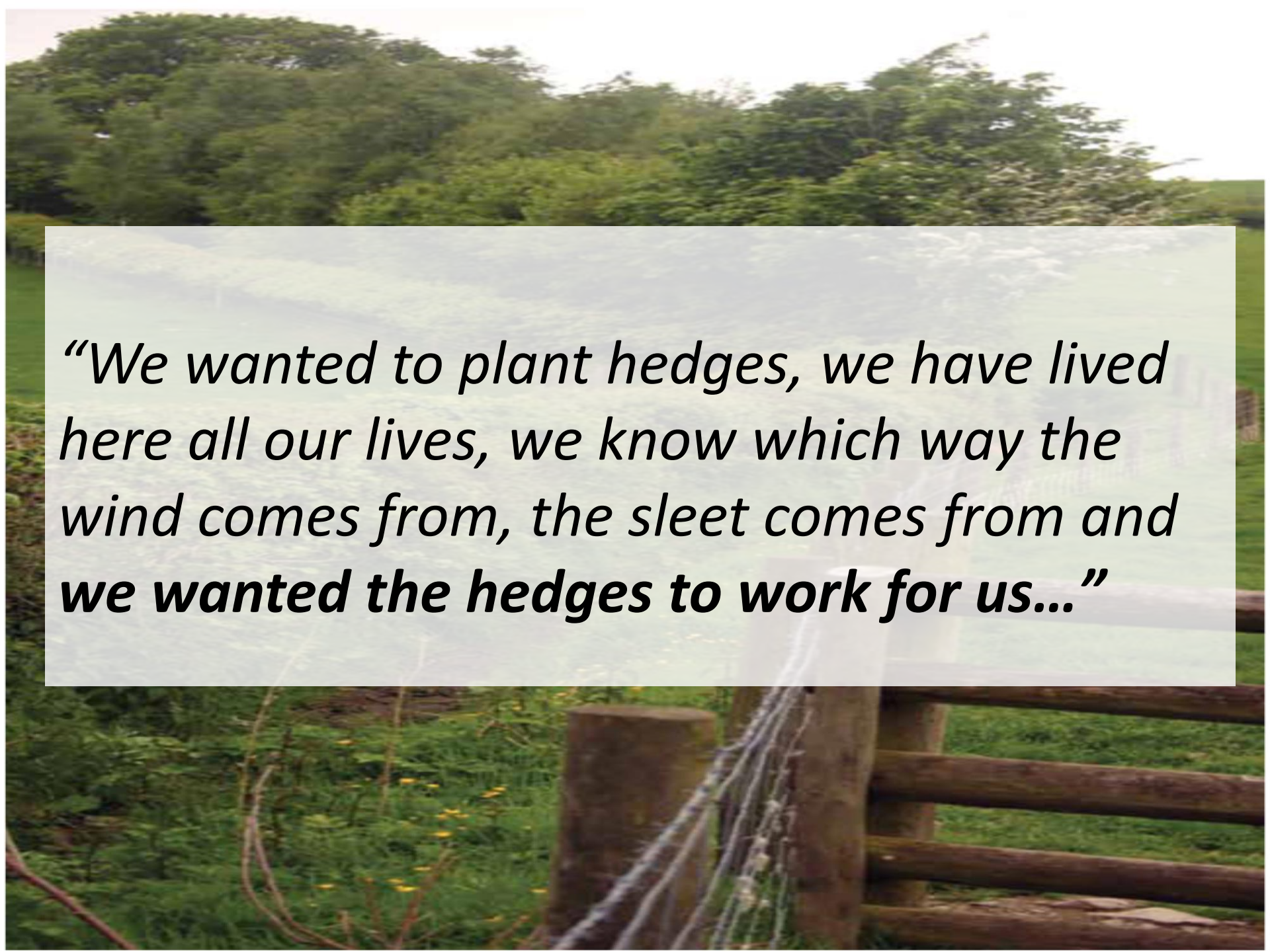
...trees don’t pay the bills.”

- Co-operative working



- Opportunities for diversification





“We wanted to plant hedges, we have lived here all our lives, we know which way the wind comes from, the sleet comes from and we wanted the hedges to work for us...”

A rural landscape featuring a green field in the foreground, a wire fence running across the middle ground, and several trees in the background under a bright sky. The text is overlaid on the left side of the image.

“Keep it simple...”

- Tailor specifications to farms not forestry
- Introductory schemes
- Capital grants
- Enable continuity & future planning

Costing Water Security

Operation	Qty	£ Rate	£ Total
New Planting Streamside Corridors (ha)	10	£2,890	28,900
<i>10.07km assume 15m wide average</i>			
Fencing perimeter of above (m)	20,000	£3.48	69,600
Approx no Gateways into above	18	£150	2,700
TOTAL			<u>£101,200</u>