

Slowing the Flow at Pickering – Levisham Estate works

Levisham Estate

- 1,371 Ha (3,388 acres) – see map over.
 - 1,165 Ha moorland (85%)
 - 111 Ha woodland (8%)
 - 95 Ha grassland (7%)
- 1,285 Ha SSSI, SAC, SPA etc. (94%) (North York Moors SSSI – 42,000Ha)
- Elevation 278 m (Levisham Moor) to 53m (Newtondale)
- Archaeological and biodiversity interest.

Tree planting

- 8,500 trees have been planted since March 2011, mainly locally grown oaks, this includes:
 - March 2011 – 4 areas (3 in Hole of Horcum and 1 at Havern Gill, Fen Moor) totalling 4.1ha. Approx. 4,000 trees planted mainly by volunteers. EWGS funding.
 - March 2011 – planting bracken slopes in Levisham Griffs – 11ha of low density planting, local oaks, by contractor. NYMNPA funded. 1,650 local origin oaks.
 - March 2013 – planted 3.4ha in Newtondale via EWGS funding. Contractor planted 2,800 local oaks + hazel (15%).
- Nearly half of these trees have been planted by the Authority's volunteers.
- Forestry Commission grant was received for the majority of the planting, via the England Woodland Grant Scheme.

Wooden dams created

- 18 timber dams were created by the National Park Authority's Apprentices in Nov 2011. These are south of the Hole of Horcum, along Levisham Beck.
- These are monitored annually by the Authority and are still working well. Overall lifespan estimated to be 10-12 years. Estimated cost to replace all 18 dams is £3,600.

Moorland gully blocking

- The Authority has spent £7,000 on blocking natural occurring moorland gullies with heather bales on various parts of the Estate from 2011 to 2013. This includes the following:
 - Feb 2011 - £2,000 of NYMNPA funding for 200 small heather bales in various locations on Fen Moor, Nab Farm and Levisham Moor.
 - Jan 2012 - £3,000 of NYMNPA funding for 84 round heather bales to create 57 dams and spreading heather brash in the Hole of Horcum (see 'Revegetation Work' below).
 - April 2013 - £2,000 of New Homes Bonus funding for more gully blocking in Hole of Horcum and Levisham Moor.
- The bales have naturalised with the surrounding environment. Ongoing maintenance using additional bales may be needed in the future but not imminently.

Revegetation work

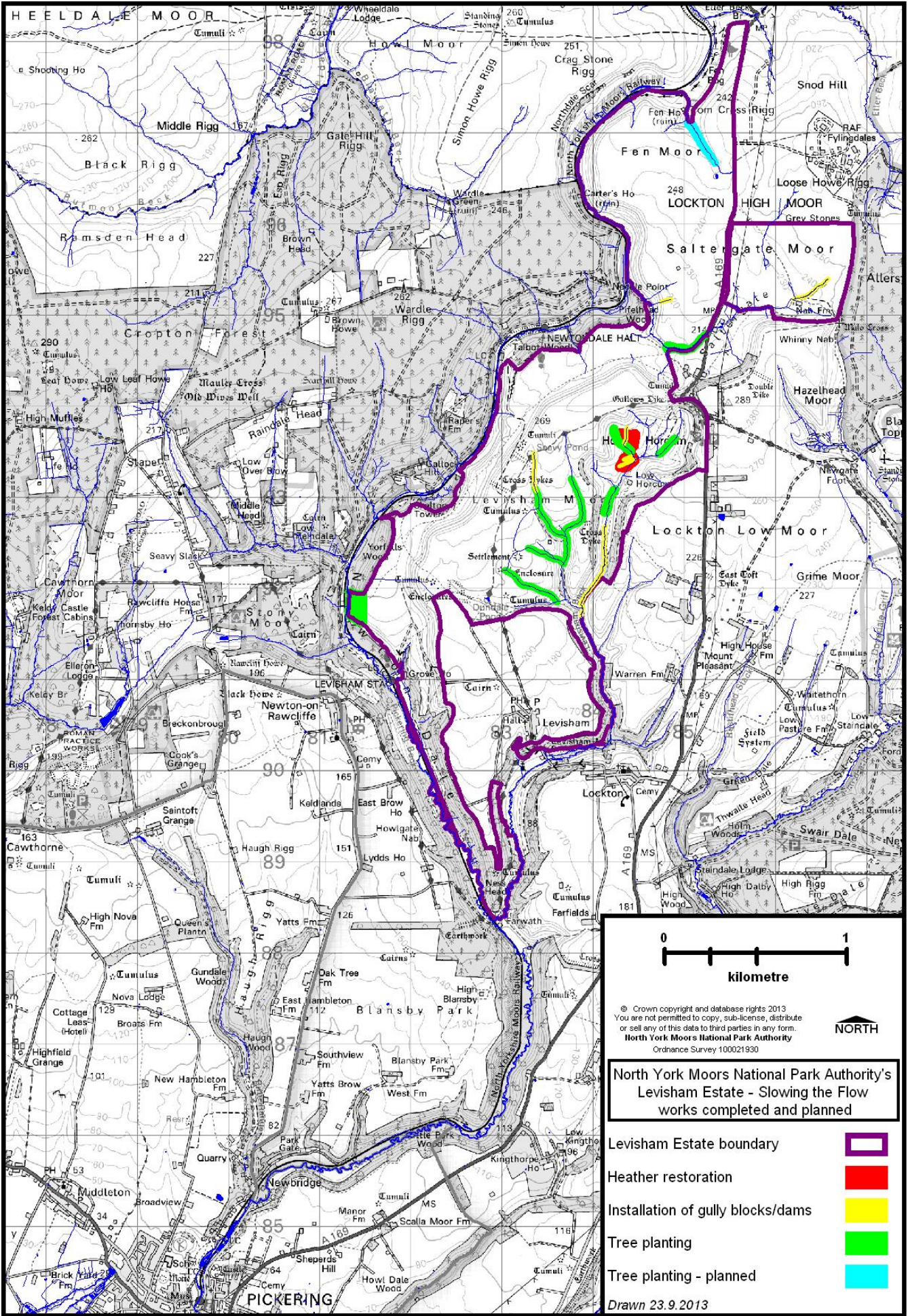
- Heather brash was spread in the Hole of Horcum in 2012 to aid re-vegetation after previous years' bracken control left some bare ground. Work done by local contractor and has been successful.

Footpath work

- An eroding footpath into the Hole of Horcum was repaired in summer/autumn 2013 with improved drainage that will slow down run off.

Heather burning buffers

- A new 10 year Environmental Stewardship Scheme agreement on Levisham Moor began on 1 November 2013, which includes 10m no-burn buffers against watercourses.



0 1
kilometre

© Crown copyright and database rights 2013
You are not permitted to copy, sub-license, distribute
or sell any of this data to third parties in any form.
North York Moors National Park Authority
Ordnance Survey 100021930

**North York Moors National Park Authority's
Levisham Estate - Slowing the Flow
works completed and planned**

- Levisham Estate boundary
- Heather restoration
- Installation of gully blocks/dams
- Tree planting
- Tree planting - planned

Drawn 23.9.2013