

***Creating Productive Woodland
Where Will The Land Come From***

Athole McKillop
Land Factor



***Creating Productive Woodland
Where Will The Land Come From***

- UK 242,595 Km²
- Or 24,259,500 Ha
- NFI – 3,166,000 Ha Woodland
- Or 13% Woodland cover



Creating Productive Woodland Where Will The Land Come From

- Northern Ireland – 8%
- England – 10%
- Wales – 15%
- Scotland 18%
- Rest of EU – circa 38%



Creating Productive Woodland Where Will The Land Come From

Woodland Expansion 1990 – 2015

Country	1990	2015	Increase
France	26.4%	31.0%	17%
Spain	27.6%	36.8%	33%
Ireland	6.7%	10.9%	62%
Greece	25.6%	31.5%	23%
UK	11.5%	13.0%	13%
Iceland			150%



***Creating Productive Woodland
Where Will The Land Come From***

UK Woodland Expansion in Context

- 1990 – 2015
- 377,000 Ha created
- Average of 15,000 Ha per annum
- Current Gvt ambition - 11M by 2020



***Creating Productive Woodland
Where Will The Land Come From***

11M by 2020 in Context

- Assuming UKFS productive woodland, say
 - 65% mixed conifers
 - 20% mixed broadleaves
 - 15% open ground
- Circa 7,500 Ha Woodland
- Or 1,500 Ha per annum



Creating Productive Woodland Where Will The Land Come From

Focus on the North of England
By this I mean

- Cumbria
- Northumberland
- Durham



North of England



***Creating Productive Woodland
Where Will The Land Come From***

North of England

- Total Area of 1,499,000 Ha
- Cumbria 718,000 Ha
- Northumberland 508,000 Ha
- Durham 223,000 Ha



***Creating Productive Woodland
Where Will The Land Come From***

- Nothing above 450m
- Not much below 200m
- Principally better grade 3
- Practically all Grade 2 and 1
- 200-450m poorer grade 3 & 4, 5



North of England



Creating Productive Woodland Where Will The Land Come From

- 493,000 Ha – 34% of NoE
- But Existing woodland
- NoE NFI – 161,000 Ha
- Circa 95,000 Ha within 200-450m
- 398,000 Ha – 27% of NoE

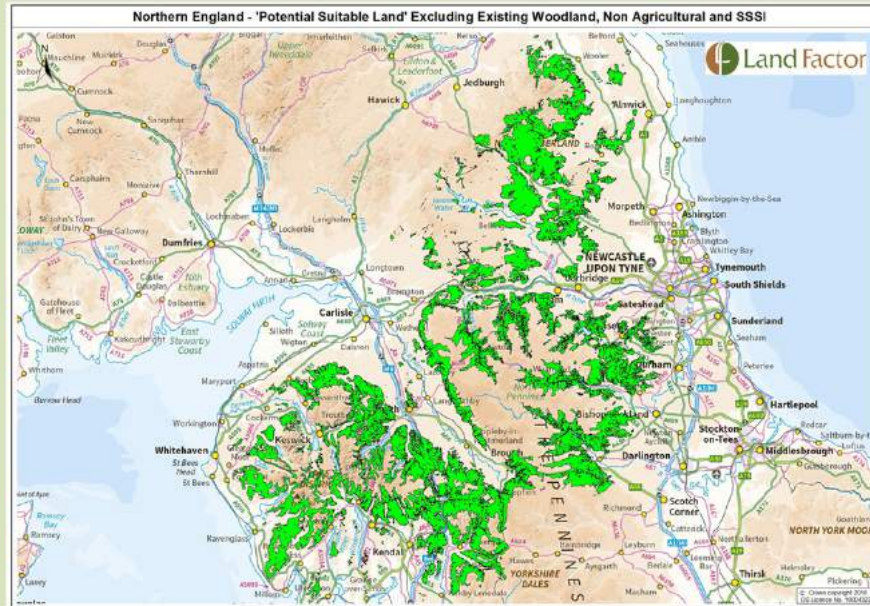
North of England



Creating Productive Woodland Where Will The Land Come From

- SSSI
- 237,000 Ha in total
- 83,000 Ha lies between 200-450m
- Non Agric. – water, concrete etc.
- Reduced to 305,000 Ha 20% of NoE

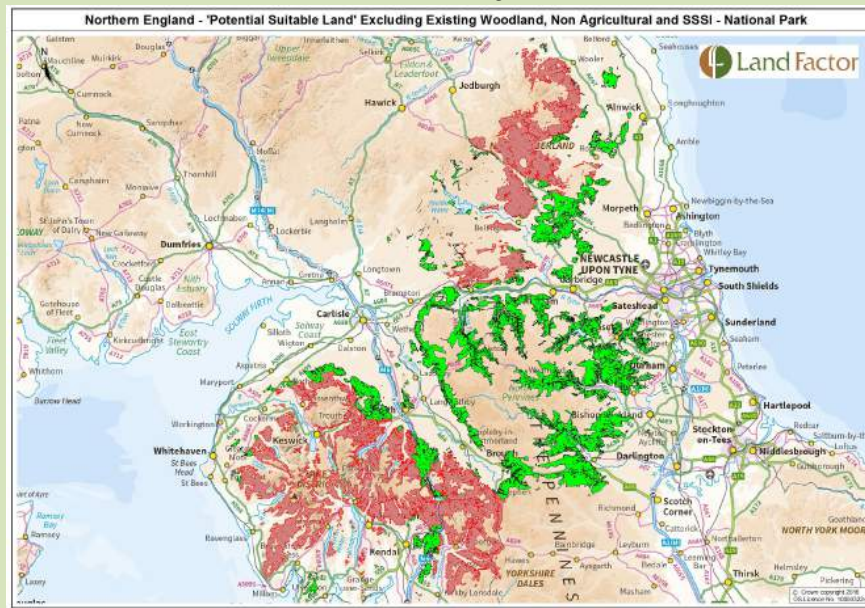
North of England



Creating Productive Woodland Where Will The Land Come From

- National Parks
- 402,000 Ha
- 217,000 Ha 200-450m
- Ex woods/SSSI - 156,000 Ha
- Reduced to 150,000 Ha 10%

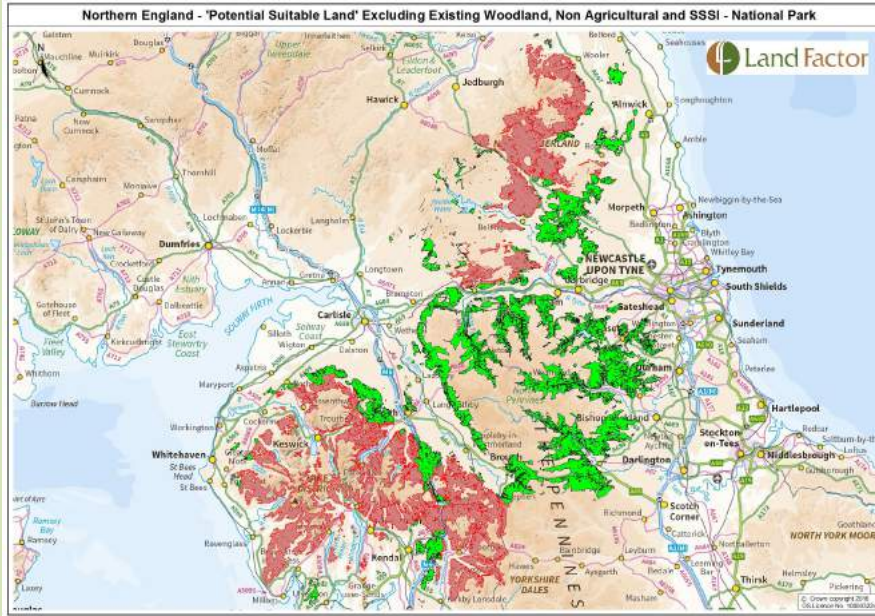
North of England



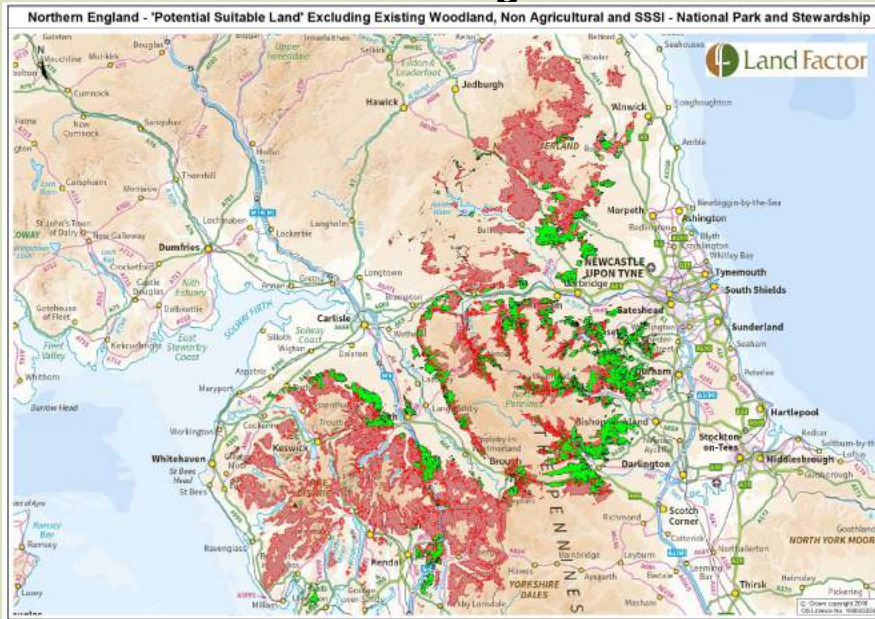
Creating Productive Woodland Where Will The Land Come From

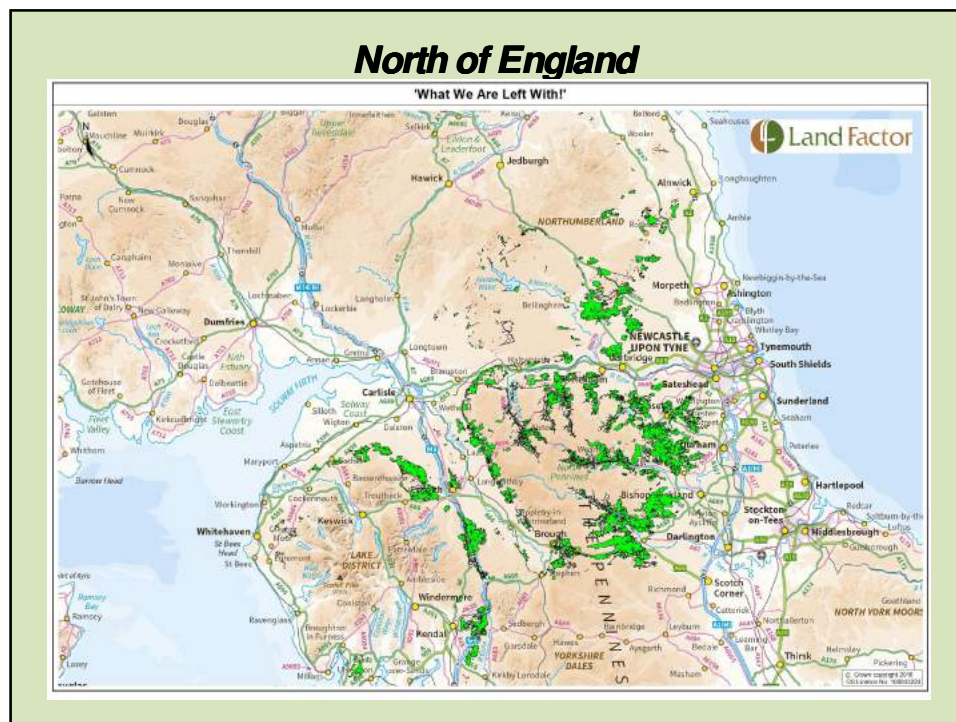
- Existing HLS
- 246,000 Ha between 200-450m
- Much already excluded
- But 58,000 not already excluded
- Balance reduced to 92,000 Ha (6%)

North of England



North of England





Creating Productive Woodland
Where Will The Land Come From

- Other land constraints aside
- CAP is a major issue
- Encourages not to plant trees
- Encouraged inefficient farming

***Creating Productive Woodland
Where Will The Land Come From***

The deadline for applying to the Scottish Upland Sheep Support Scheme will be extended to 30 November 2017.

The support scheme is targeted at sheep production on the poorest quality land to help farmers maintain the social and environmental benefits that sheep flocks bring to these areas.

Scottish Government – September 2017



***Creating Productive Woodland
Where Will The Land Come From***

Subsidy Addiction

...the current system of farm support has led to “subsidy addiction” and recommends a full review of the benefits farmers receive.

Professor Dieter Helm July 2017



***Creating Productive Woodland
Where Will The Land Come From***



***Creating Productive Woodland
Where Will The Land Come From***

CAP Payment Examples

- 400 Ha hill livestock farm
- Limited Environmental payments
- 2015 – Subsidy = 48% gross revenue
- 2016 – Subsidy = 38% gross revenue



***Creating Productive Woodland
Where Will The Land Come From***

CAP Payment Examples

- 800 Ha hill livestock farm/moorland
 - Env/Agric Subsidies - £90,000 p.a.
- 1200 Ha moor, farming and sporting
 - Env/Agric Subsidies - £200,000 p.a.



***Creating Productive Woodland
Where Will The Land Come From***

- Eskdalemuir Report (2014)
- Excluding grants and subsidies
- Agricultural output -£22/ha
- Productive woodland output £149/ha



***Creating Productive Woodland
Where Will The Land Come From***

The Opportunity

- Brexit
- CAP will go
- New Agriculture Policy (2018?)
- UK Gvt. Needs Guidance
- Confor, WT, CLA, ICF



***Creating Productive Woodland
Where Will The Land Come From***

The Opportunity

- Hammond – More productivity
- Gove – Not at the expense of the Env't
- Confor – continued influence
- A Common Countryside Policy
- Farming and Forestry.....

