

A close-up photograph of a person's hands working on a yellow prefabricated facade panel. The person is wearing a watch and a bracelet. A red diagonal stamp with the text 'Proven practice!' is overlaid on the image.

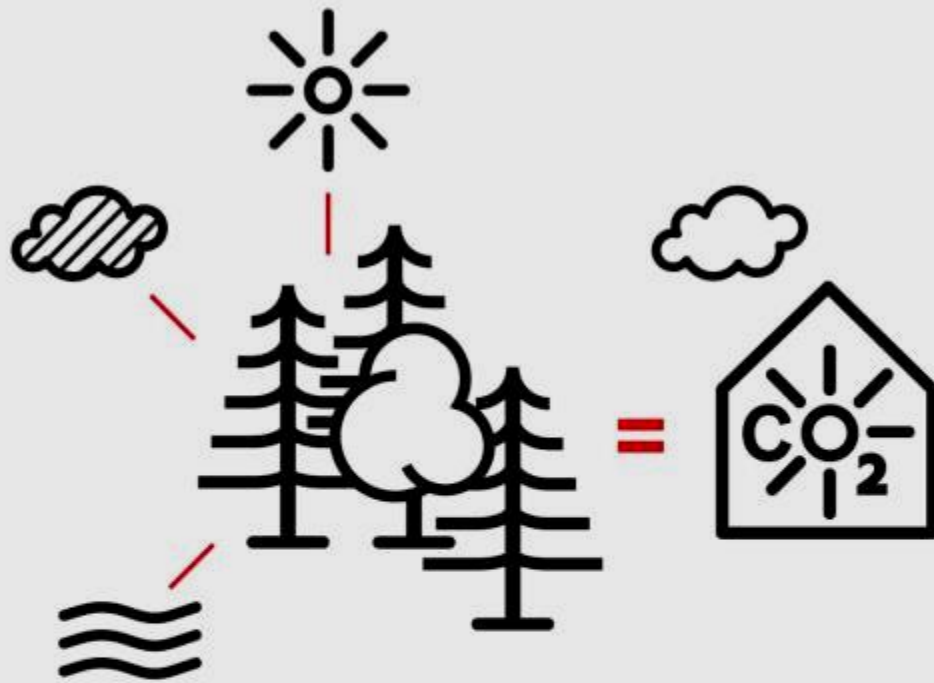
**Proven practice!**



WoodWisdom-Net

TES EnergyFaçade –  
Retrofit prefabricated!

[www.tesenergyfacade.com](http://www.tesenergyfacade.com)



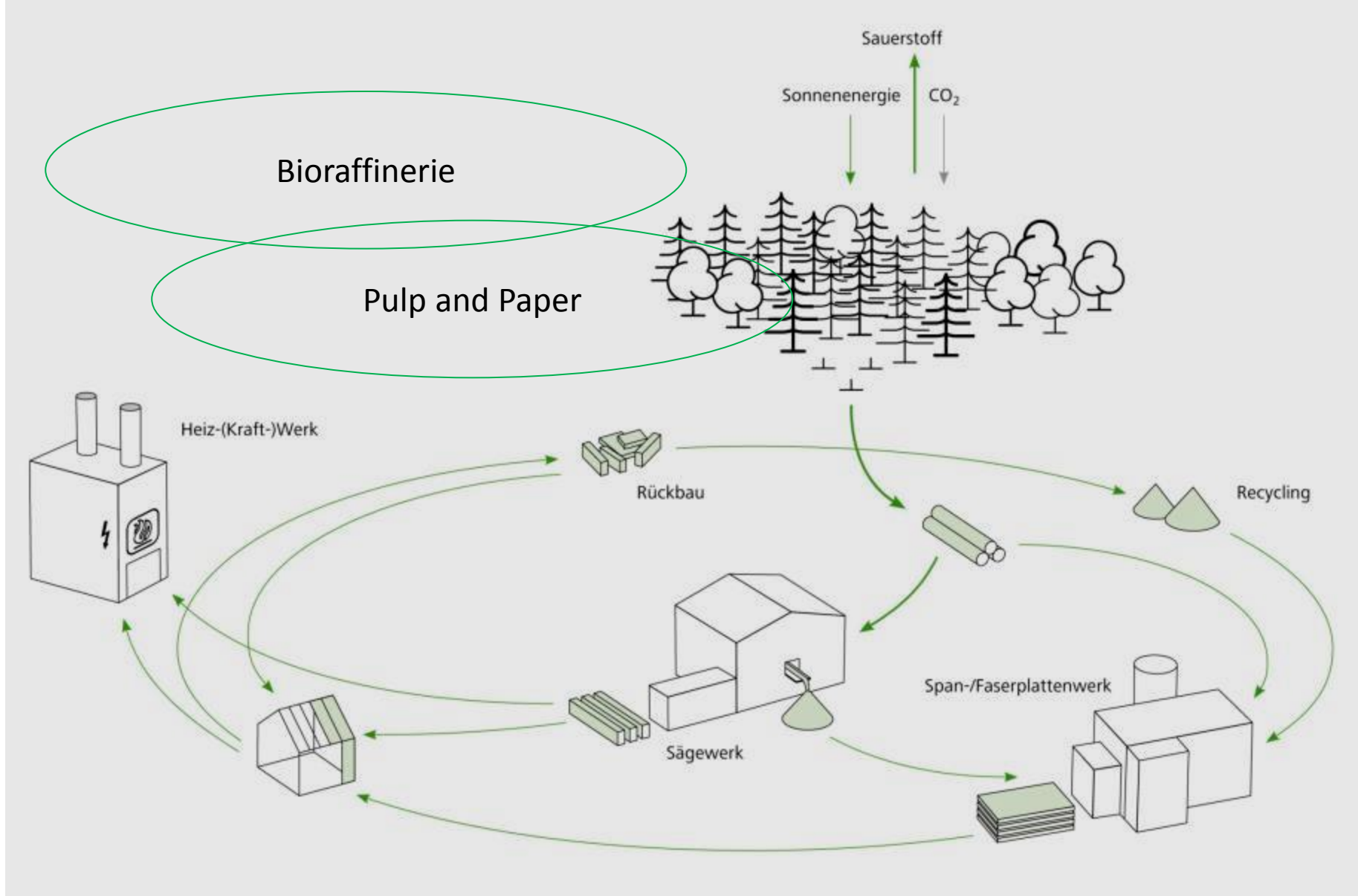
**Bauen mit Holz  
= aktiver Klimaschutz**

Holzforschung München  
Technische Universität München



building with wood is active climate protection

lattkearchitekten



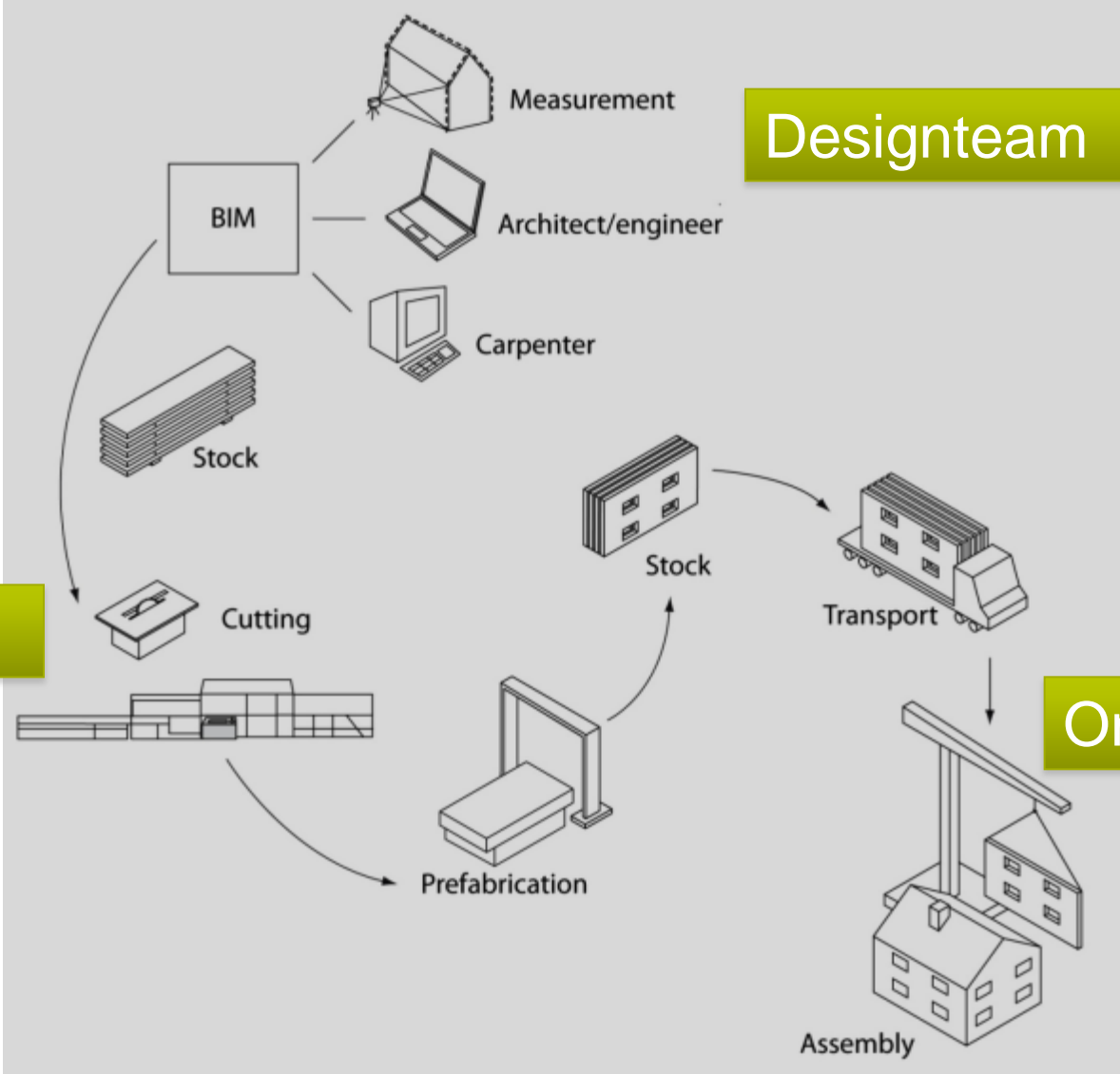
value chain

Quelle:  
 Bauen mit Holz = aktiver Klimaschutz, 2010  
 Holzforschung München, Technische Universität München  
 Gestaltung: Atelier Reinhard Gassner, Schlins, Österreich

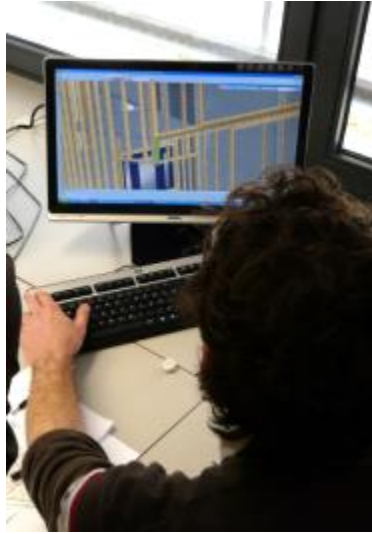
Designteam

Off site

On-site



customisation



- design . planning . production = precision and quality of the system
- reduction of time on-site = less noise and disturbance
- utilization of a great variety of cladding materials = chance for architecture
- integration of load bearing, space and / or solar or HVAC elements

TES EnergyFacade: off-site fabrication



Grüntenstrasse 30-36, Augsburg D



Foto credits: WBG Augsburg

built 1965

lattkearchitekten



elevator

corridor

envelope

bath

wintergarten

balkony

the task

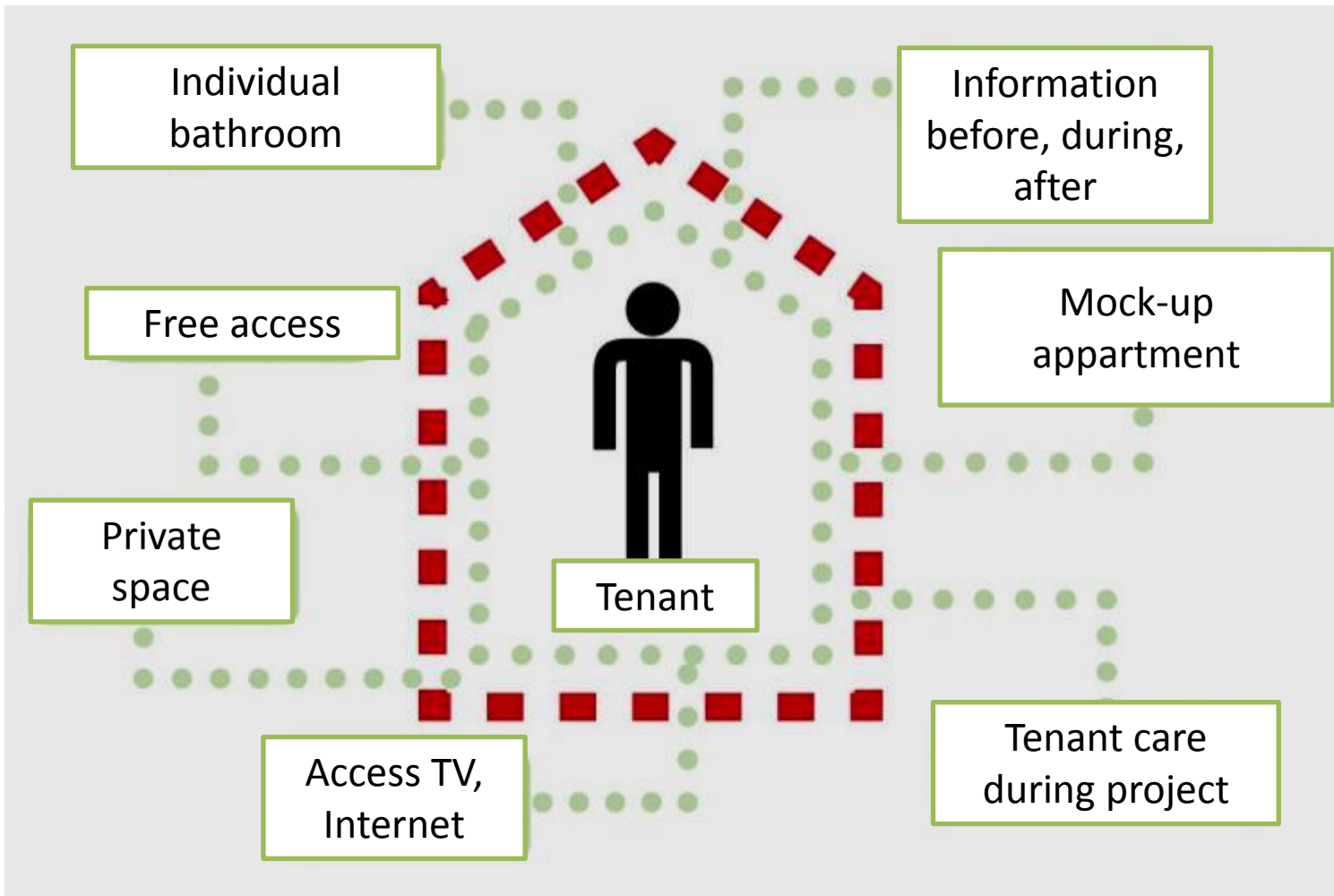




Foto credits: Eckhart Matthäus

retrofitted 2011-2012

lattkearchitekten



tenants perspective



survey (tachymetry)



Reference : Gump & Maier GmbH, DE Binswangen

parametric 3D model

lattkearchitekten



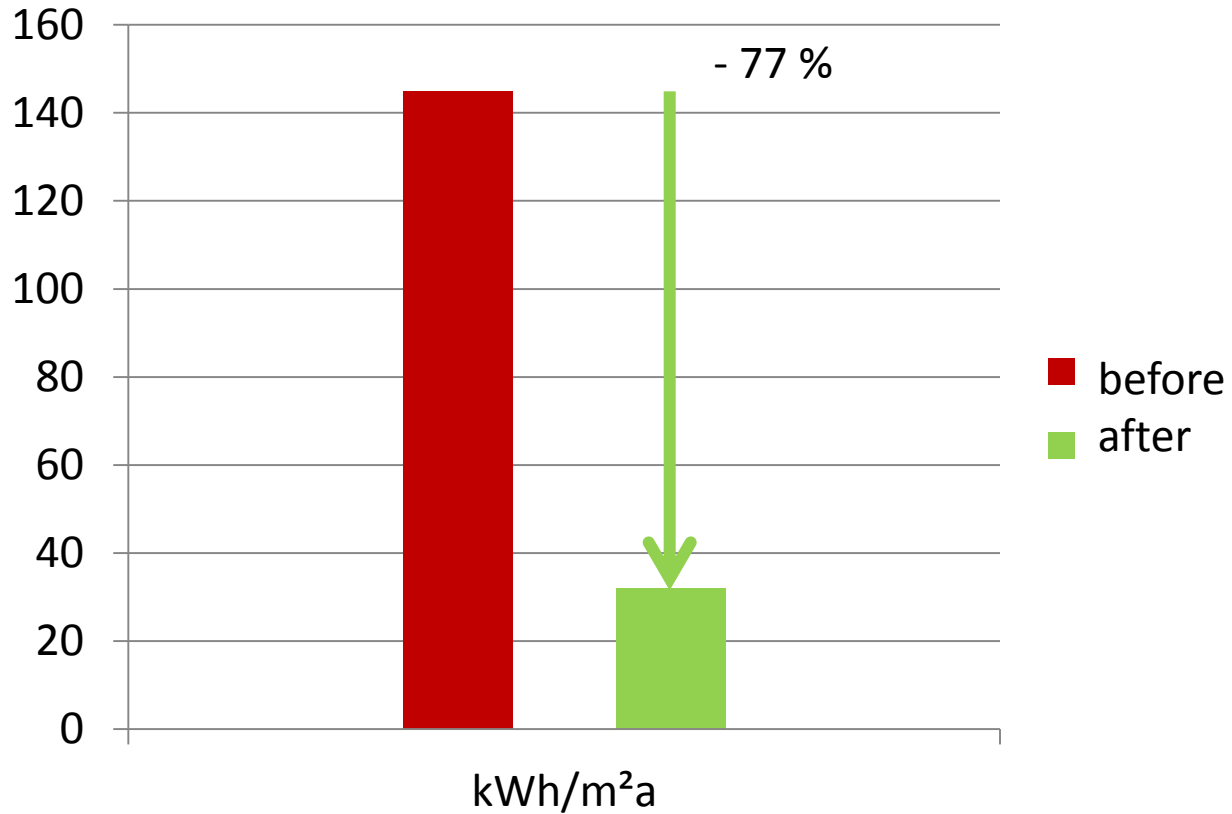


the second chance for architecture!



the second chance for architecture!

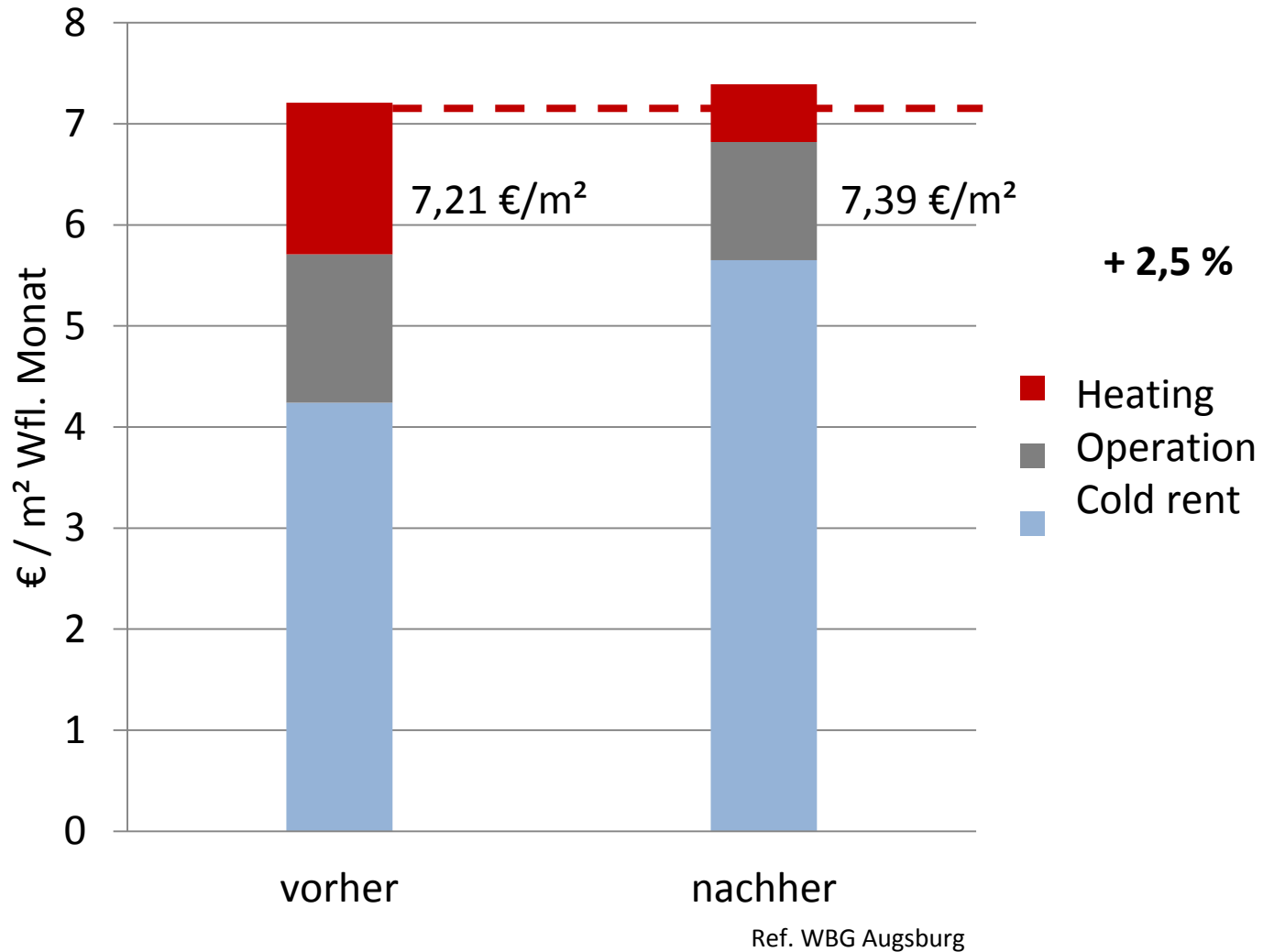
lattkearchitekten



Ref: Stadtwerke Augsburg

heat energy consumption (real data)





cost increase



**P**  
bar för  
Parkplatzeier

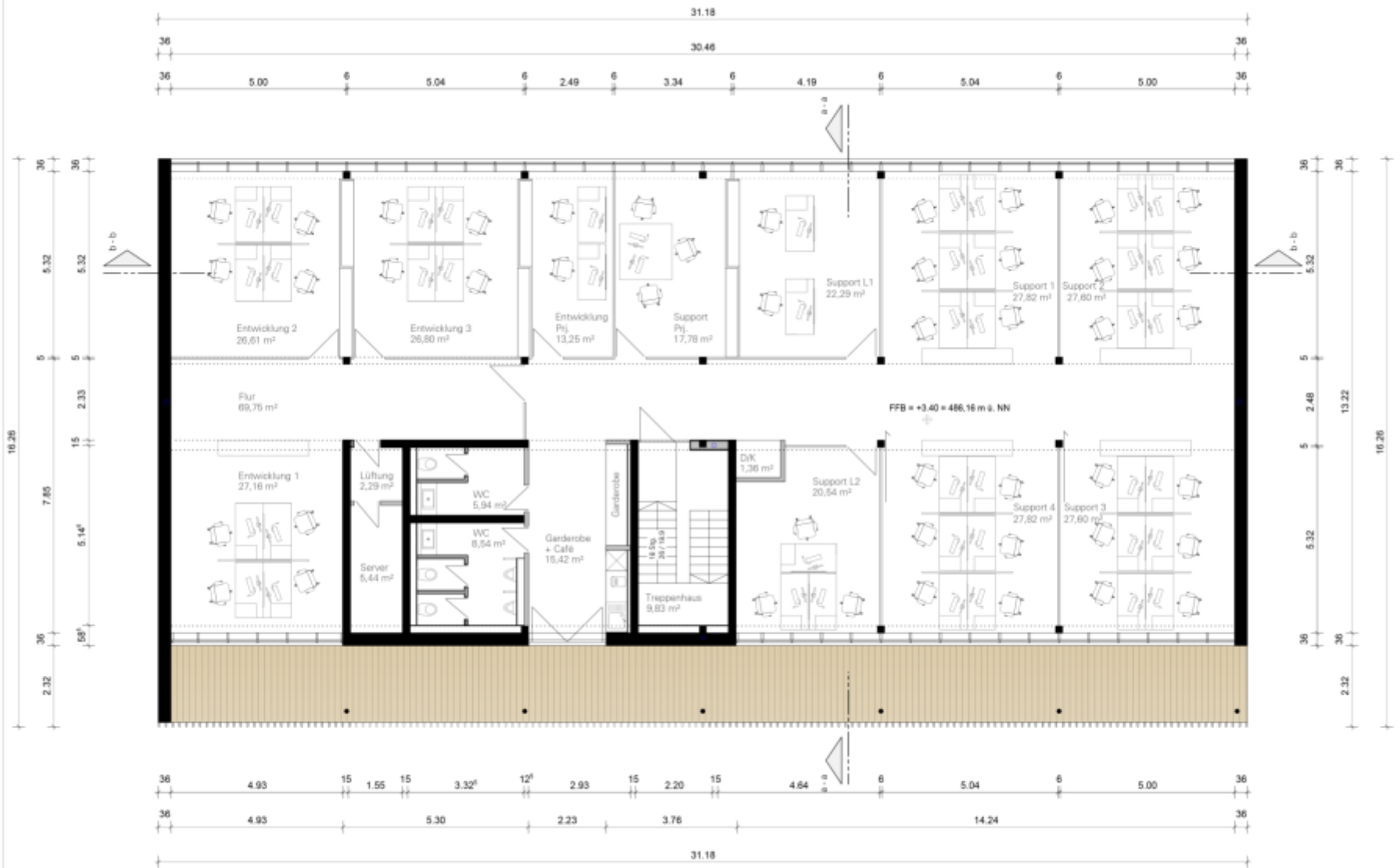
Platzzeichen abgelesen  
Werbung ist nicht  
kennzeichnend erlaubt





## 1 Bauteilpositionen

<b>Unterzüge</b>			
	Unterzug optionales 2. OG	b x h = 200 x 450 mm	GI24h
	Unterzug optionales 2. OG	b x h = 200 x 350 mm	Buchen-Furnierschichtholz
	Unterzug 1. OG / EG	b x h = 250 x 550 mm	GI24h
	Unterzug 1. OG / EG	b x h = 250 x 450 mm	Buchen-Furnierschichtholz
	Unterzug Achse 4/B-C EG	HEB 340 oder HEM 260	S235
<b>Stützen</b>			
	Standartstütze	b x h = 240 x 240 mm	GI24h
	Standartstütze	b x h = 180 x 180 mm	Buchen-Furnierschichtholz



Grundriss 1. OG

first floor











