

Researching the issues to deliver
multiple benefits: developing
*Trees in Hard Landscapes, a
Guide for Delivery*



Trees & Design
Action Group

www.tdag.org.uk

Trees in the Townscape

A Guide for Decision Makers

12 Principles

Plan

1/ Know Your Tree Resource
[Page 10](#)

2/ Have a Comprehensive Tree Strategy
[Page 15](#)

3/ Embed Trees into Policy and Other Plans
[Page 20](#)

Plant/Protect

7/ Procure a Healthy Tree
[Page 48](#)

8/ Provide Soil, Air and Water
[Page 52](#)

9/ Create Stakeholders
[Page 56](#)

Design

4/ Make Tree-friendly Places
[Page 30](#)

5/ Pick the Right Trees
[Page 35](#)

6/ Seek Multiple Benefits
[Page 40](#)

Manage/Monitor

10/ Take an Asset Management Approach
[Page 64](#)

11/ Be Risk Aware (Rather than Risk Averse)
[Page 69](#)

12/ Adjust Management to Needs
[Page 73](#)



Trees in Hard Landscapes A Guide for Delivery



Trees & Design
Action Group

The Urban Environment

○ Pedestrians
○ Cycle Lane

Not to scale - for illustrative
purposes only





More from trees

The Mersey Forest Plan



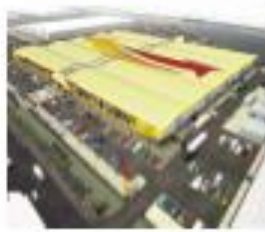
Our vision is to get “more from trees” to help make Merseyside and North Cheshire one of the best places in the country to live.



We will work with partners, communities and landowners across rural and urban areas, to plant trees and woodlands, improve their management, and complement other habitats. This will increase woodland cover to 20% of the area. We will revitalise a woodland culture, and bring economic and social benefits through our transformed environment.

Trees Leading to Jobs





1. Peel International Trade Centre (ITC)

a new trading hub for manufacturing companies from the UK and overseas to showcase their products. Phase 1 will comprise circa 300,000 sq ft and will house 900 companies.



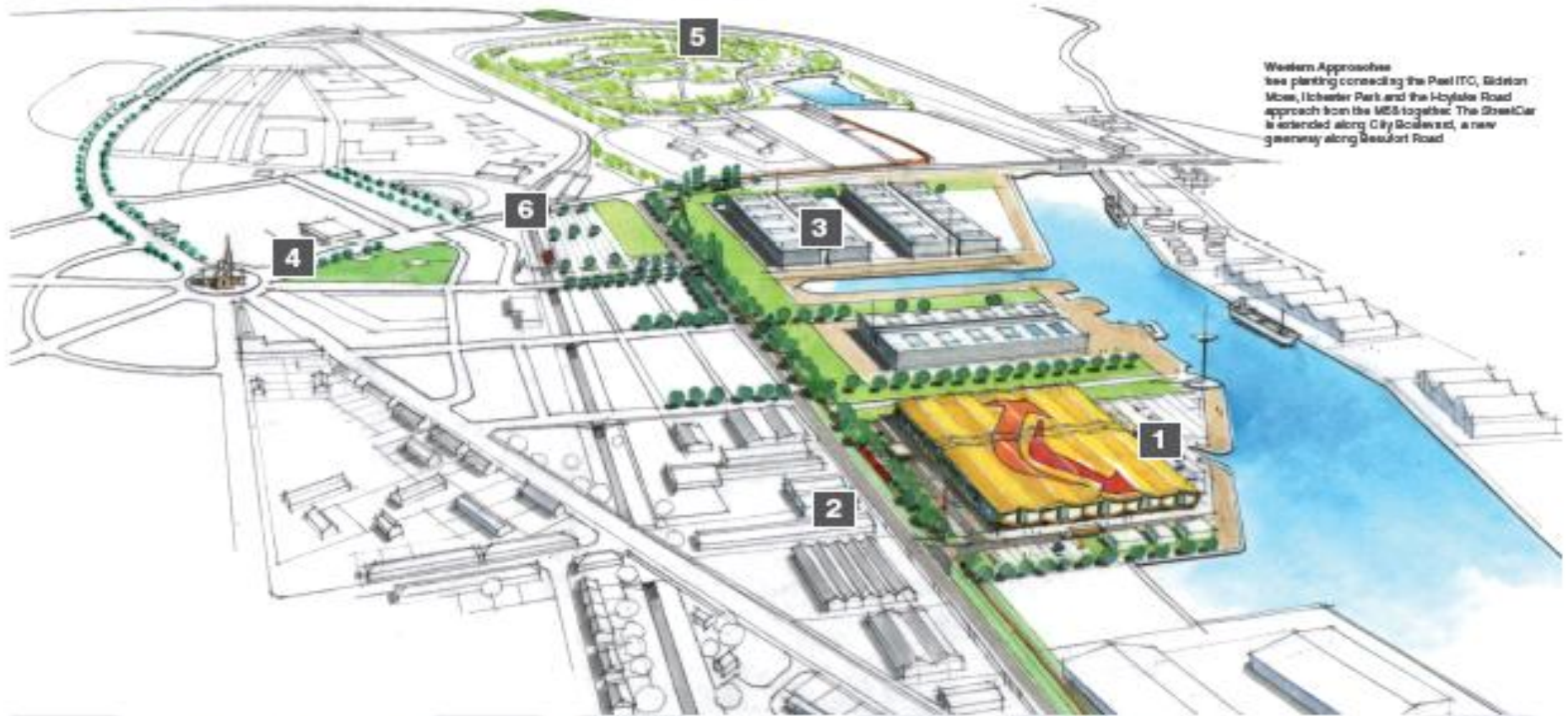
2. Wirral StreetCar and City Boulevard

Peel are working with Merseytravel and Wirral Council to extend the tram from Woodside to the ITC. New StreetCars will be introduced to provide a high quality service. The StreetCar will run along City Boulevard, a new greenway along Beaufort Road and Bidston Dock. New StreetCars will be introduced to provide a high quality service.

Mersey Waters Enterprise Zone

3. MerseyWaters Enterprise Zone ECA

This area of West Float is designated under the MerseyWaters Enterprise Zone for Enhanced Capital Allowance. The location is ideal for advanced manufacturing.



Western Approaches tree planting connecting the Peel ITC, Bidston Moss, Ilchester Park and the Hoylake Road approach from the M58 together. The StreetCar is extended along City Boulevard, a new greenway along Beaufort Road



4. Ilchester Park and St James Church

the Park and St James Church are well placed to provide a focus for tree planting and creating connections to Wirral Waters



5. Bidston Moss

is a community woodland enclosed by the M58, Merseyrail line and Bidston Dock. At present, it is underused as access is limited. The proposal is to look at creating a temporary access point with parking on Bidston Dock.

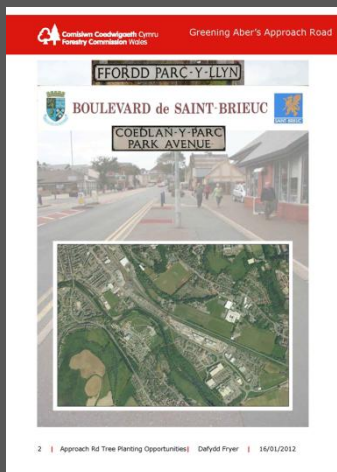


6. Birkenhead North Rail Station Park & Ride

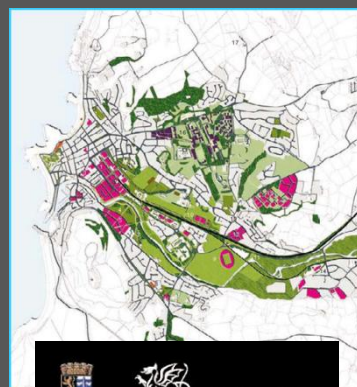
Merseytravel have recently completed Phase 1 of the Park & Ride. There are opportunities for tree planting as part of City Boulevard.

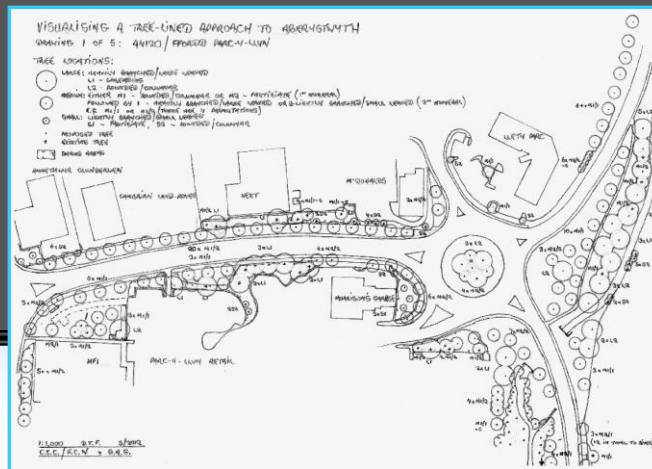


COED ABER



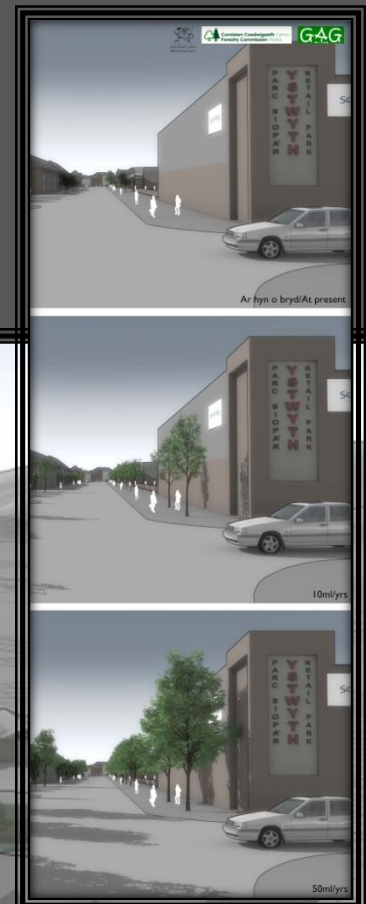
 **Cyfoeth
Naturiol**
Cymru
**Natural
Resources**
Wales





Rhagweld lôn goediog ar y ffordd fewn i Aberystwyth

Visualising a tree-lined approach to Aberystwyth



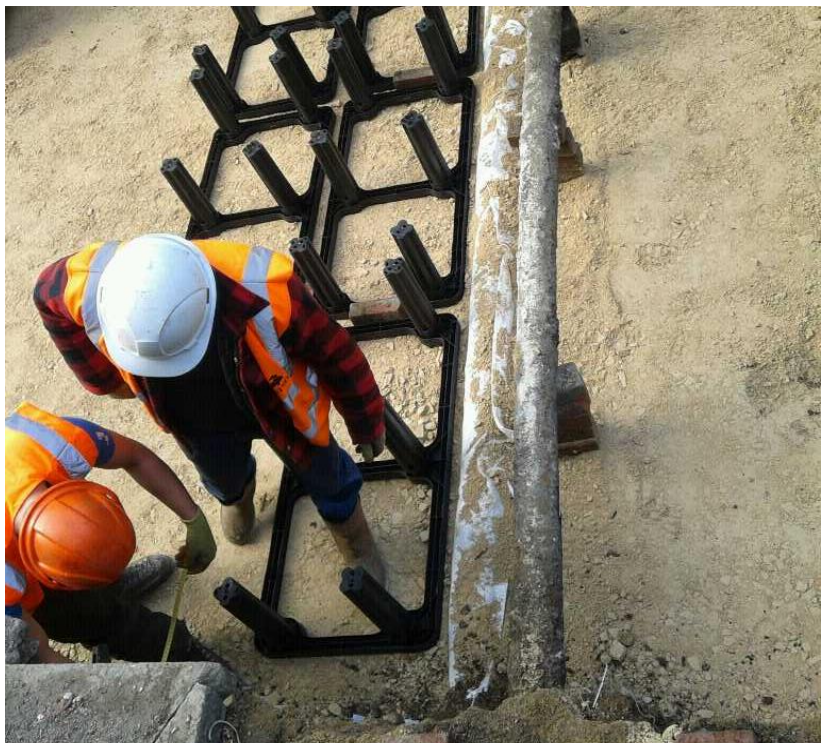


 **Cyfoeth
Naturiol**
Cymru
**Natural
Resources**
Wales



Dortmund Square









With many thanks to:

The Mersey Forest – www.merseyforest.org.uk

Natural Resources Wales - www.naturalresourceswales.gov.uk

Leeds City Council – www.leeds.gov.uk