

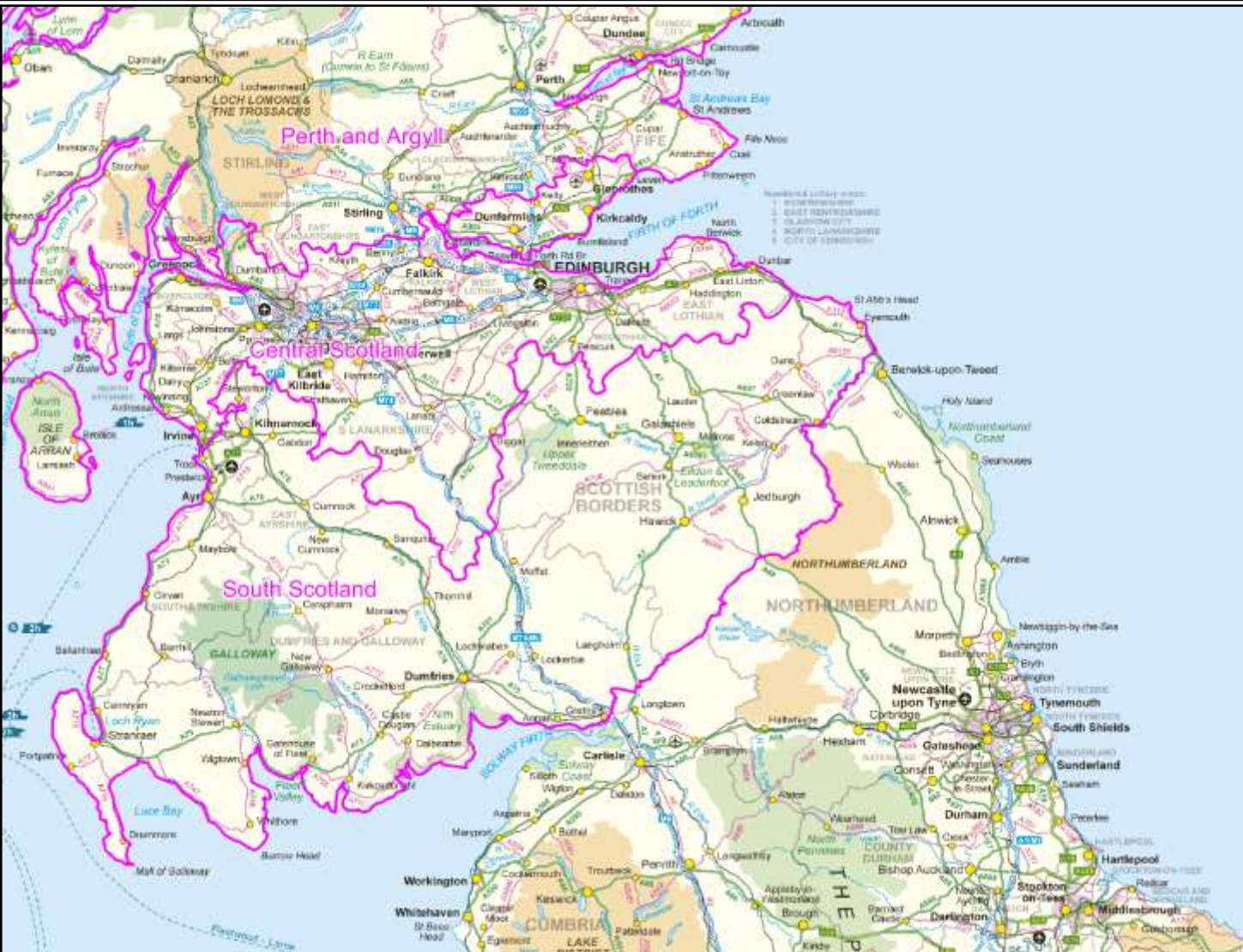


Forestry Commission Scotland

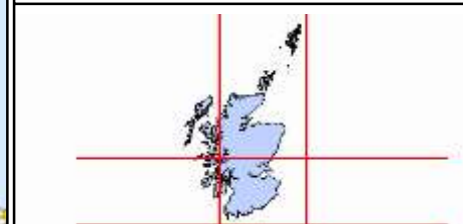
South Scotland Conservancy

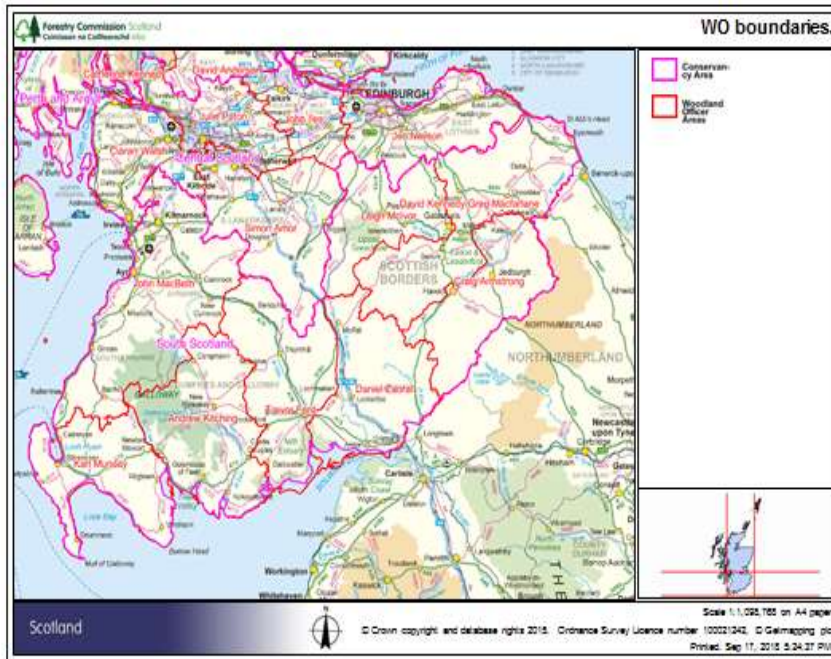
Doug Howieson
Conservator.


Forestry Commission Scotland
 Coimisean na Coilltearachd Alba



 **Conservancy Area**





9% of the population of Scotland (461k)

17% of the land area, so rural in nature over much of the Conservancy.

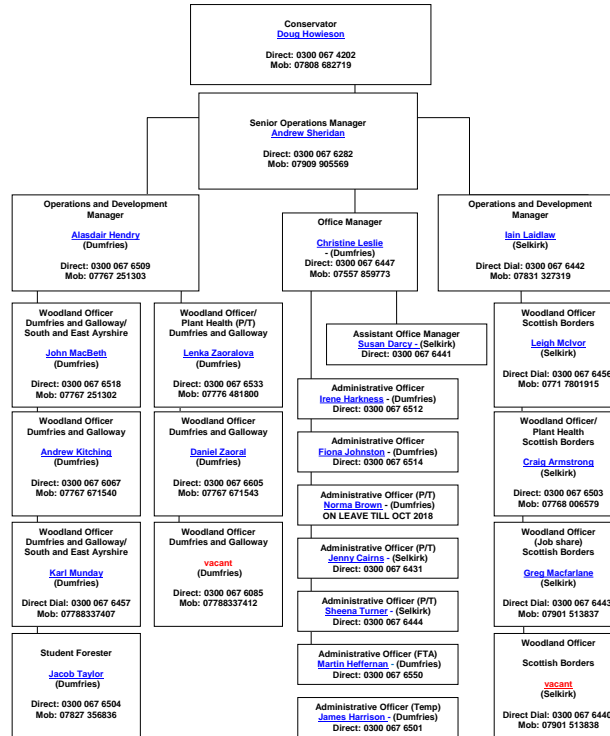
Forestry Commission Scotland
South Scotland Conservancy
Greystone Park
55/57 Moffat Road
Dumfries
DG1 1NP
Tel: 0300 067 6500

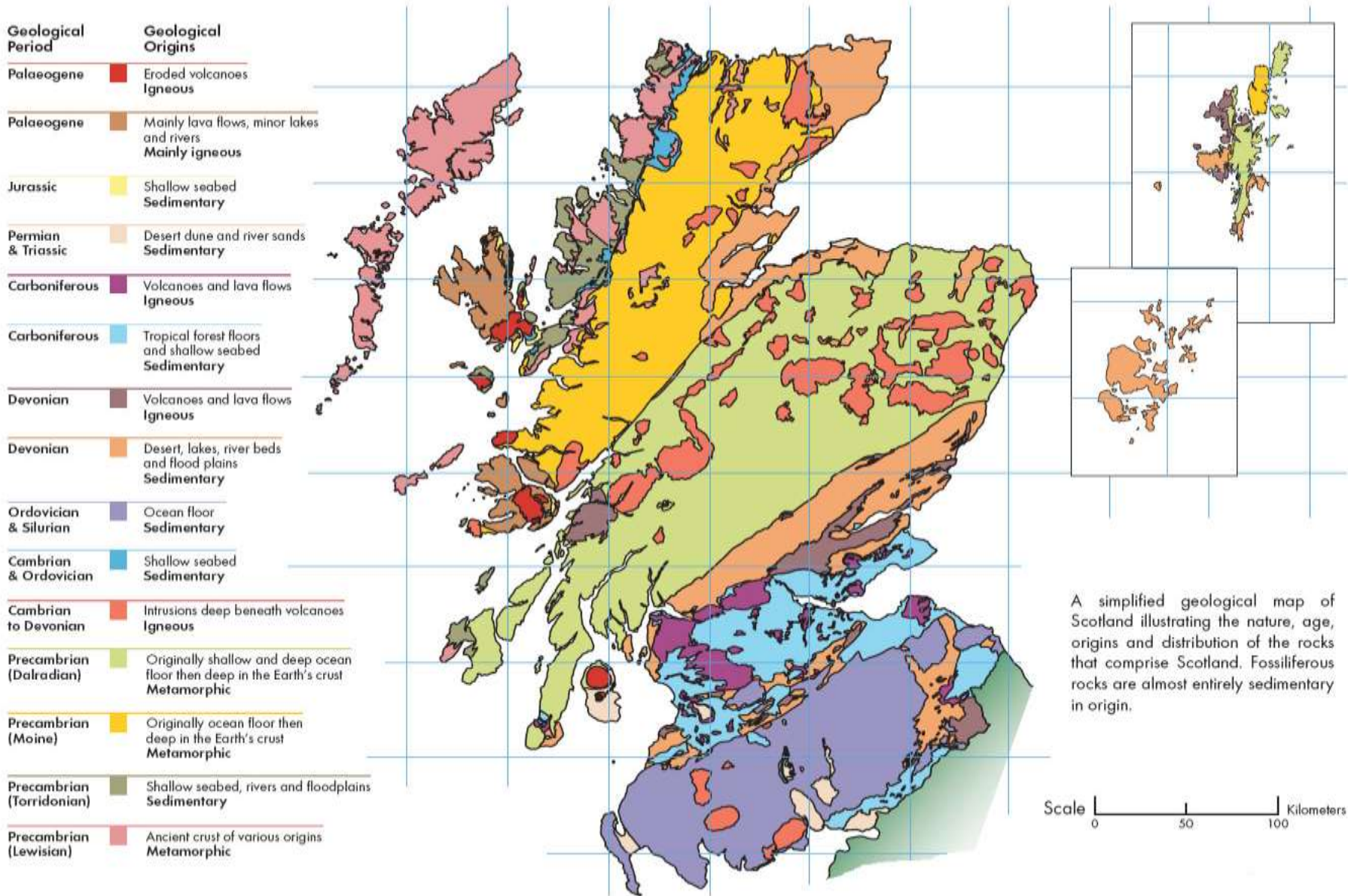


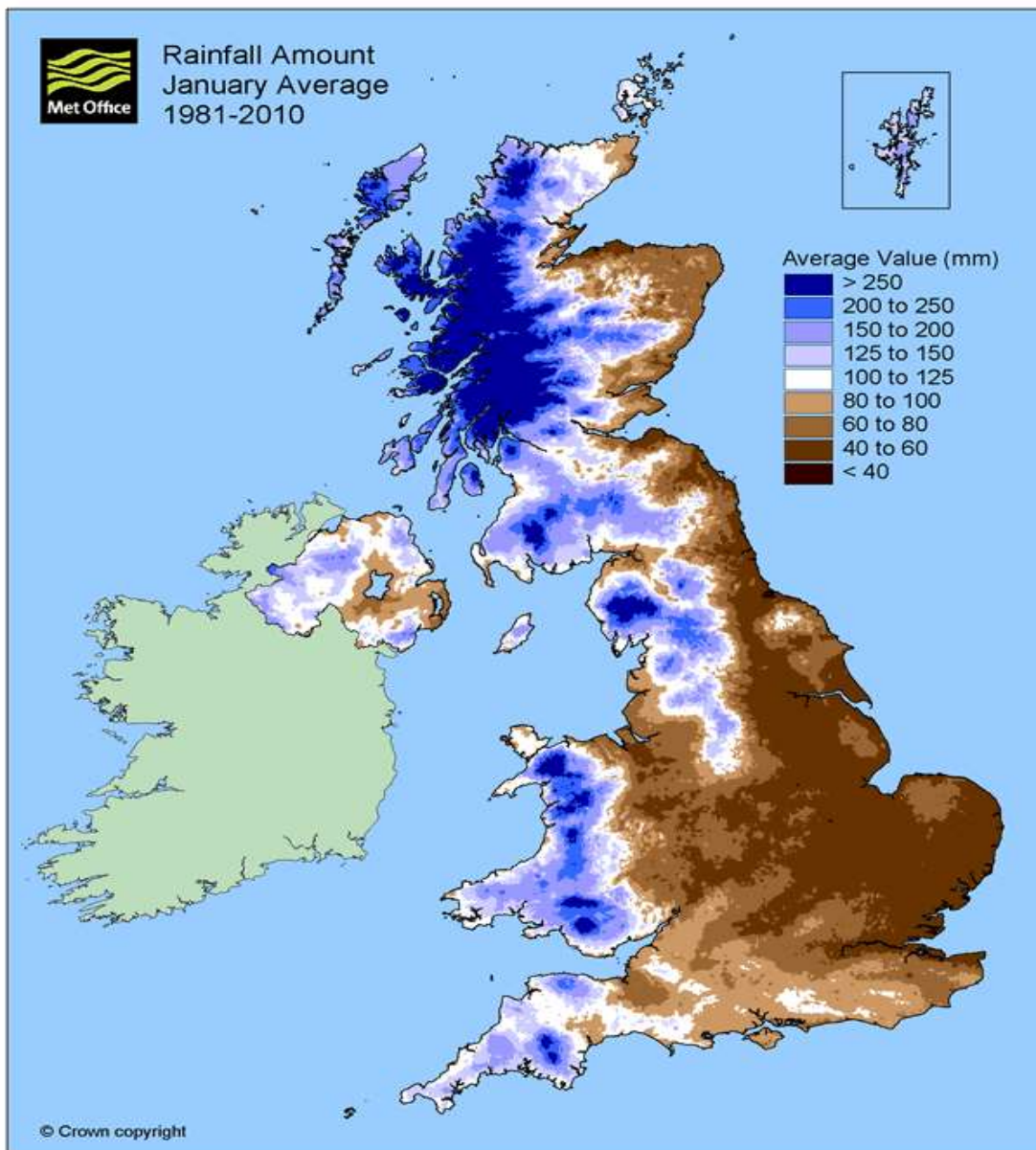
Forestry Commission Scotland
South Scotland Conservancy
Area Office
Weavers Court
Forest Mill
Selkirk TD7 5NY
Tel: 0300 067 6007

E-mail: southscotland.cons@forestry.gsi.gov.uk

South Scotland Conservancy Organisational Chart







- **Stats:** Clearing round 32, August 2018
- More than 50% of all of the FGS basic conifer option for woodland creation has been approved in South Scotland Conservancy: predominately Sitka spruce as the main species: circa 6000 ha in three years.
- 32% of all FCS small farm woodland WC approved options (114ha of 348ha)
- But, 19% of all native broadleaf schemes in FCS.
- In the Conservancy 82% of our WC schemes are basic conifer options and 40% of these schemes exceed 100 ha.
- For the schemes that exceed 100ha, the average size is 215ha compared to 180ha elsewhere in FCS.
- We award 47% of all of the FCS WIG restocking and restructuring grants (monetary value).
- So: lots of conifer WC on bigger than average schemes and very active restocking and restructuring given timber removals for the market. Active interest in small farm woodlands and taking a good share of the native broadleaf option.







Forestry Commission Scotland is the Scottish Government's forestry advisor and regulator
18 September 2018

OFFICIAL SENSITIVE
Phytophthora ramorum surveys and confirmed infections 2018

Larch SPHNs for P. ramorum

- ▲ Covered by P. ramorum PHN, FE (93)
- Covered by P. ramorum SPHN, Private (137)

Larch surveys for P. ramorum

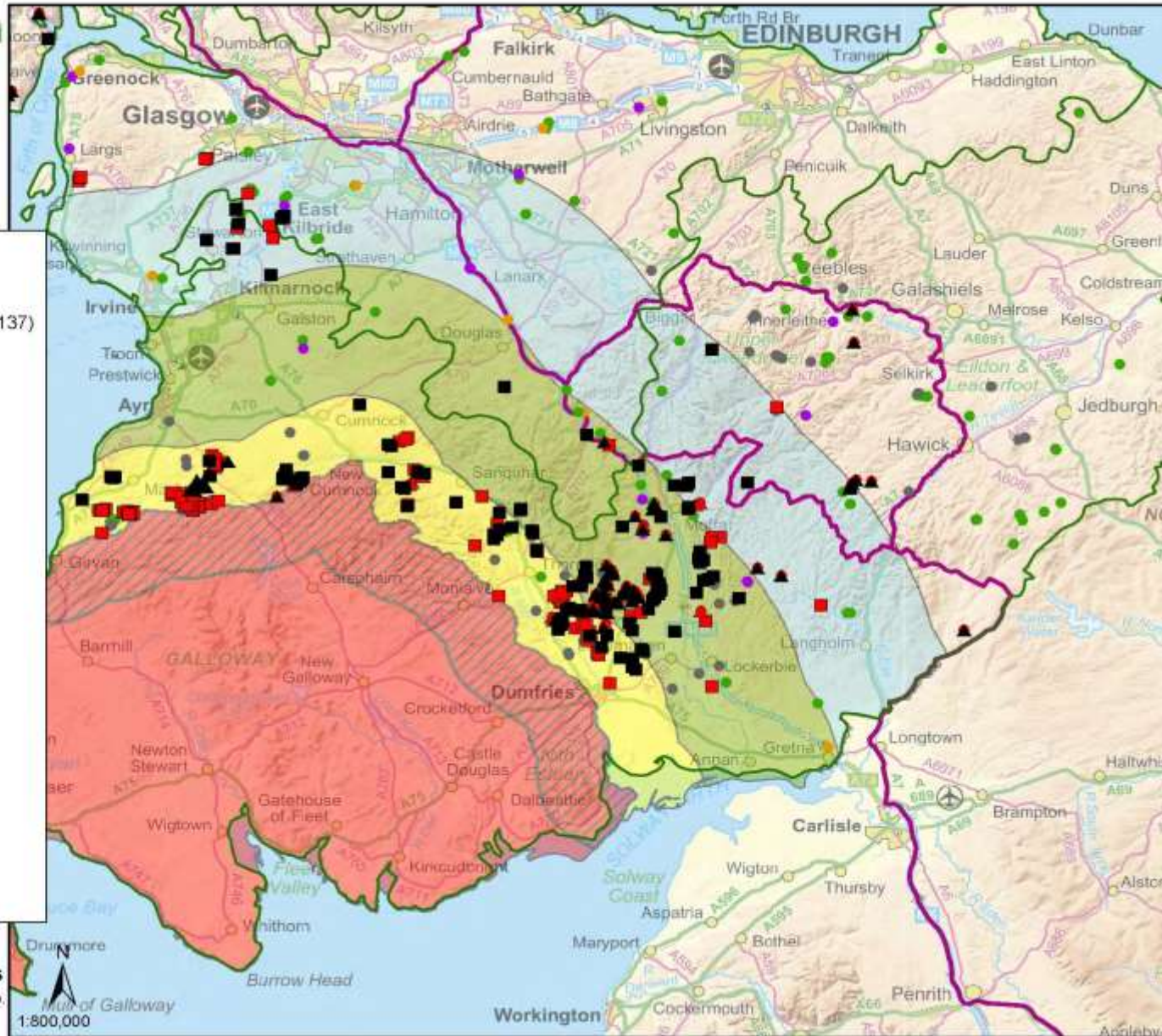
- ▲ P. ramorum positive, FE (99)
- P. ramorum positive, Private (244)
- Still to survey (61)
- P. ramorum positive - total (343)
- Lab Result Pending (16)
- Monitor (13)
- Total Pr not found (101)

Total Larch sites (530)

- FCS Conservancies
- P. ramorum risk zones

Management Zone buffers

- P. ramorum Management Zone
- MZ internal 10km
- MZ plus 10km
- MZ plus 10km to 30km
- MZ plus 30km to 50km



- **Phytophthora ramorum**
- Current strategy for SPHN's (furthest away first: 30 to 50km from MZ)
- Felled as soon as possible but end of December for MZ+30-50km
- End of February for MZ+10km
- Circa 350+ new positive infections outside the MZ due to
 - a) Favorable climatic conditions last year.
 - b) Inoculum on the inner edge of the MZ
- >80% of all of the larch in Scotland, outside the MZ is disease free.

	Totals	MZ +10km	MZ 10km to 30km	MZ 30km to 50km	MZ 50km and beyond
All Scotland	424	193	120	38	73
Highland	0	0	0	0	0
Grampian	1	0	0	0	1
Perth & Argyll	59	0	0	0	59
Central	20	0	3	10	7
South	344	193 (53%)	117(32%)	28(10%)	6

SG Felling Permissions consultation:

<https://consult.gov.scot/forestry/fellingandrestocking/>

Runs from 20th August to 14th October ahead of implementation on 1st April.

Derived from....

The Forestry and Land Management (Scotland) Act 2018.

One of its objectives is to modernise the legislative framework for regulating forestry, reflecting the modern policy environment and introducing a regulatory regime that is more flexible, agile and better able to adapt to changes.

Felling permissions better linked than the '67 act to sustainable forest management (adding to the protection of timber supplies)

- SG Scottish Forestry Strategy Consultation
- <https://consult.gov.scot/forestry/scotlands-forestry-strategy-2019-29/>
- Runs from 20th September to 29th November.
- Derived from....
The Forestry and Land Management (Scotland) Act 2018.
- 50 Year vision: Scotland will have more forests and woodlands, which will be sustainably managed as a much greater part of the nations natural capital, providing a resilient, high quality and growing resource that supports a strong economy, a thriving environment, and healthy and empowered communities.
- 3 primary objectives for the next 10 years to support the vision
 - Sustainable and inclusive economic growth
 - Healthy and high quality environment
 - Empower more people to improve their health, well-being and life chances

- SG Scottish Forestry Strategy Consultation
- A number of major issues to be addressed / considered in relation to the three primary objectives above (wood fibre supply and demand, rural land-use; productivity and integration, developing an interest in forestry in young people, climate change etc etc)
- Possible progress indicators for the 10 year primary objectives (volume of wood available and supplied, areas of new native woodland and forest created, numbers of forest visits, community ownership and so on).

- STTF 2018/19.
- £1.82M awarded from FCS in South Scotland Conservancy: across all of the council areas.
- Some schemes / applications were rejected as they didn't attract TTG / TTF support.
- A feature this year was the number of applications that sought funding for surface dressing of existing roads rather than for strengthening and upgrading of "strategic routes".
- Reasons cited were beast of the east and volume of timber wagon traffic over some heavily used routes.
- Rural transport now under a different ministerial portfolio: Michael Mathieson.

- Potential for integrated woodland expansion.

LCA 6.1-7 FWS

	pre /pot	
236,091.56	252,813.13	D&G
41,399.64	59,094.64	E A'shire
119,263.80	170,175.95	SB'rs
37,311.82	54,625.47	S A'shire
434,066.82	536,709.19	Cons

Class 6.1 - Land capable of use as rough grazings with a high proportion of palatable plants

Class 6.2 - Land capable of use as rough grazings with moderate quality plants

Class 6.3 - Land capable of use as rough grazings with low quality plants

Class 7 - Land of very limited agricultural value

LCA	WEAG > RPID
Arable agric = 1-3.1	>10%
Mixed Agric = 3.2 - 4.2	>10%
Improved grassland = 5.1-5.3	50ha / 100ha
Rough Grazing = 6.1-7	n/a