

MORE BUMS ON SEATS WHY URBAN FORESTERS & ARBORISTS NEED TO LEARN MORE ABOUT ENGINEERING



Russell Horsey MICFor
Chartered Arboriculturalist
Goetre Villa Ltd

ARE TREES JUST TOO GOOD



Highway Tree Stock



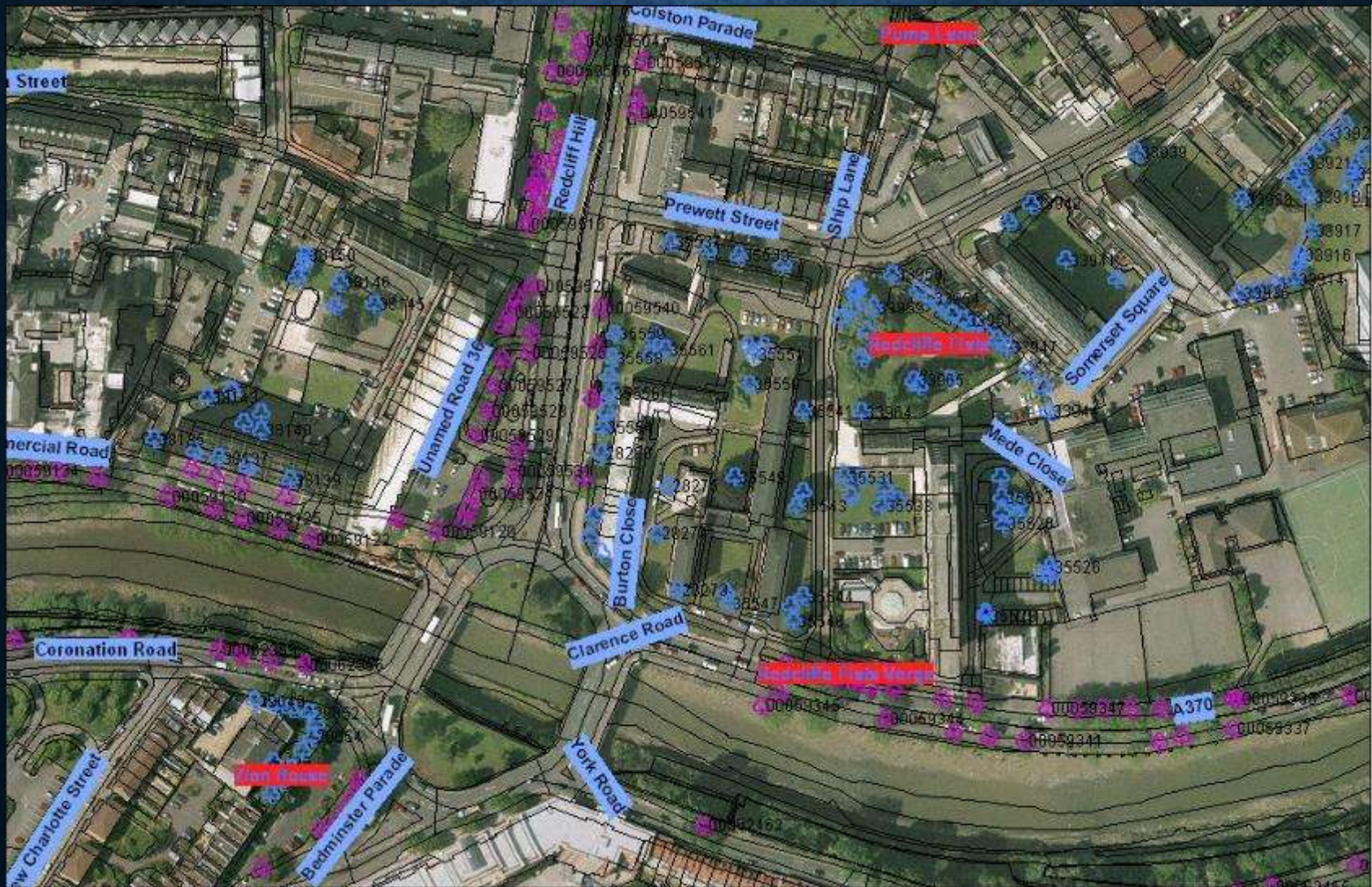
MANAGED FOR SUBSIDENCE



HIGHWAY CONCERNS



RESOURCE MAPPING



PUBLIC DID NOT TRUST BRISTOL COUNCIL

YOUR TOP LOCAL NEWSPAPER
NORTH WEST BRISTOL
OBSERVER
Thursday, March 15, 2007
PART OF THE FAMILY
20p WHERE SOLD

ANGER AS BEAUTIFUL OAK TREE IS FELLED

Caroline

A 300-year-old tree which residents say was needlessly felled.

The tree, known as the 'Red Oak', stood for centuries in the heart of the village. It was a beautiful tree, with a thick trunk and a wide canopy of leaves. It was a source of pride for the village and a landmark for many years.

It was felled last week by Bristol Council, in order to make way for a new road. The council says the tree was diseased and posed a safety hazard. However, many residents believe the tree was healthy and that the council acted without consulting them.

The council said the tree was in poor health and that its removal was necessary for public safety. They also said that the tree was in the way of a new road and that it was necessary to clear the area.

However, many residents believe the tree was healthy and that the council acted without consulting them. They say the tree was a beautiful tree and that it was a source of pride for the village. They also say that the council should have consulted them before felling the tree.

The council said it was sorry about the loss of the tree and that it was necessary for public safety. They also said that they would be planting new trees to replace the one that was felled.

The council said it was sorry about the loss of the tree and that it was necessary for public safety. They also said that they would be planting new trees to replace the one that was felled.

The council said it was sorry about the loss of the tree and that it was necessary for public safety. They also said that they would be planting new trees to replace the one that was felled.



A 300-year-old tree which residents say was needlessly felled.

THE TREE WAS FELLED BY BRISTOL COUNCIL IN ORDER TO MAKE WAY FOR A NEW ROAD. MANY RESIDENTS BELIEVE THE TREE WAS HEALTHY AND THAT THE COUNCIL ACTED WITHOUT CONSULTING THEM.

THE COUNCIL SAID IT WAS SORRY ABOUT THE LOSS OF THE TREE AND THAT IT WAS NECESSARY FOR PUBLIC SAFETY. THEY ALSO SAID THAT THEY WOULD BE PLANTING NEW TREES TO REPLACE THE ONE THAT WAS FELLED.

Thursday March 8 2007 *Observer*



Leafy future

TREES have been planted in Redland to replace ones affected by disease.

Children from the Redland Green School helped to plant 100 saplings and two hedgerows that have replaced damaged and diseased ones on Redland Green.

In 2005, severe horse chestnut leaf-miner, a disease affecting the speckles throughout Britain. In addition, a mature tree badly damaged in a storm more than 20 years ago had to be removed in a dangerous condition and replaced by a new tree.

The new trees were funded by the Redland and Colton Amenity Society (RCAS), and the hedgerows were paid for by Bristol City Council. Alison Stimpson, of RCAS, said: "The trees are very important to the local area. The disease of 1950s was identified in the 1970s but unfortunately have been affected by the disease. The new trees are slow and big, so we hope they will not be knocked down by strong winds or anything else."



Planting trees in our city

PUBLIC INVOLVEMENT







| FINANCIAL YEAR | TREES PLANTED |
|----------------|---------------|
| 05/06 | 50 |
| 06/07 | 201 |
| 07/08 | 557 |
| 08/09 | 742 |
| 09/10 | 857 |
| 10/11 | 1200 |
| 2011-2015 | 36,000 |

REEDLEY ROAD



WHERE IS THE MONEY

- Department for Health - £148 billion
- Department for Transport - £20 billion
- Defra - £2.2 billion
 - £60 million on new planting

THE £6000 TREE PIT



Integrating Green Infrastructure



2006 - The Dings, Homezones £1.6 million - (£600k design)



2008 Bristol Cycling City - £11.6 million



New Avenue Plantings



Political Backing to Save Trees



Brislington Hill



SUDS



NEW ELMS



TREES BECAME A MUST HAVE



A4 Bath Road



WhiteLadies Road



PUBLIC SAFETY



Hengrove Park



CAPITAL PROJECTS



Inspire The Next Generation

