



# Tree Health, Resilience and Sustainability

## A Nursery Perspective

### 22<sup>nd</sup> April 2015

Christie-Elite Nurseries, Forres, Moray, Scotland, IV36 3TW

Tel: 01309 672 633 [matt@christie-elite.co.uk](mailto:matt@christie-elite.co.uk) [www.christie-elite.co.uk](http://www.christie-elite.co.uk)

How do pests and diseases affect the nursery ?





Infection can be prevented.

Infection can be treated.

Symptomatic plants succumb or are culled out at grading.



It is counter-productive for a grower to put out a defective plant

Disease itself is not always the main issue.....*it's the reaction to it*



*Movement ban 2012 - to slow spread*  
*300,000 ash destroyed*

*Fraxinus sp. – Chalara fraxinea*





*Quarantine approach, SPHN 2011 & 2014*  
**570,000** pine destroyed

*Pinus sp. – Dothistroma*





# *Moratorium (effect) 2014*

*Larix sp. – Phytophthora ramorum*





*Precautionary 'resistance' to planting*

*Juniperus – P. australcedrae*





Imported plants pose the greatest risk to biosecurity....

Lets grow everything in the UK

**Where is the incentive to increase UK production ?**

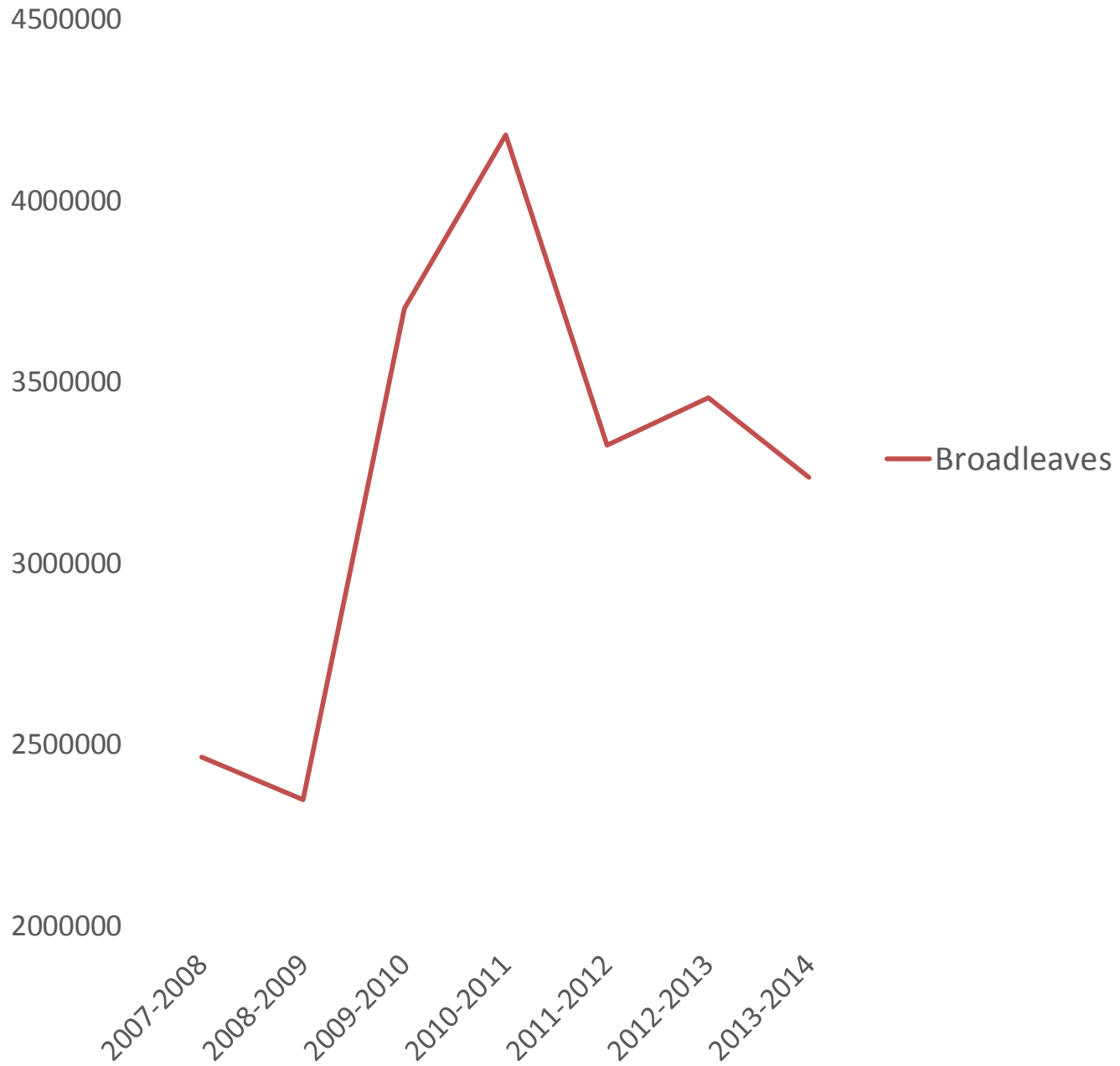




Until there is stability in the market, imports will continue.

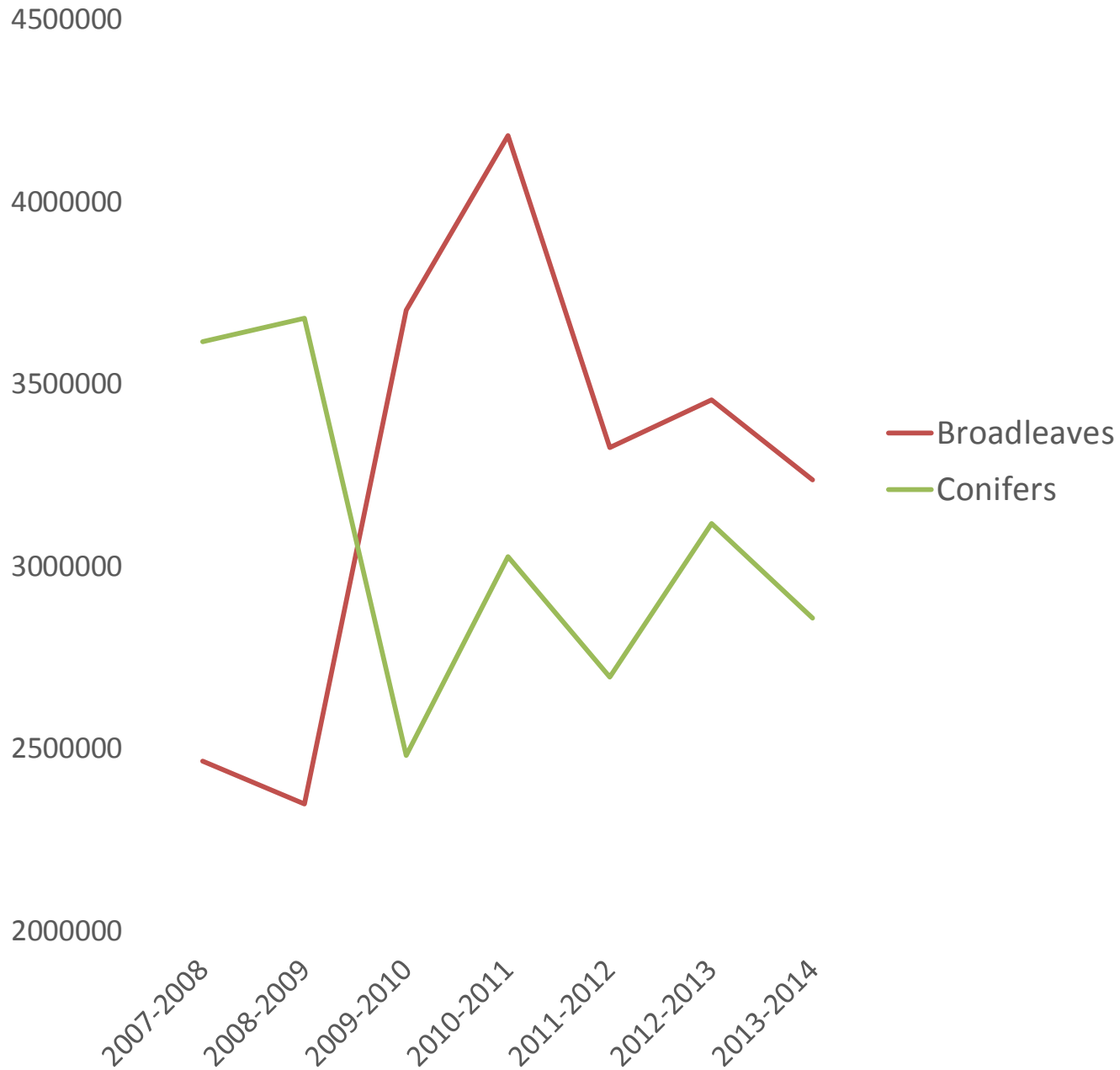


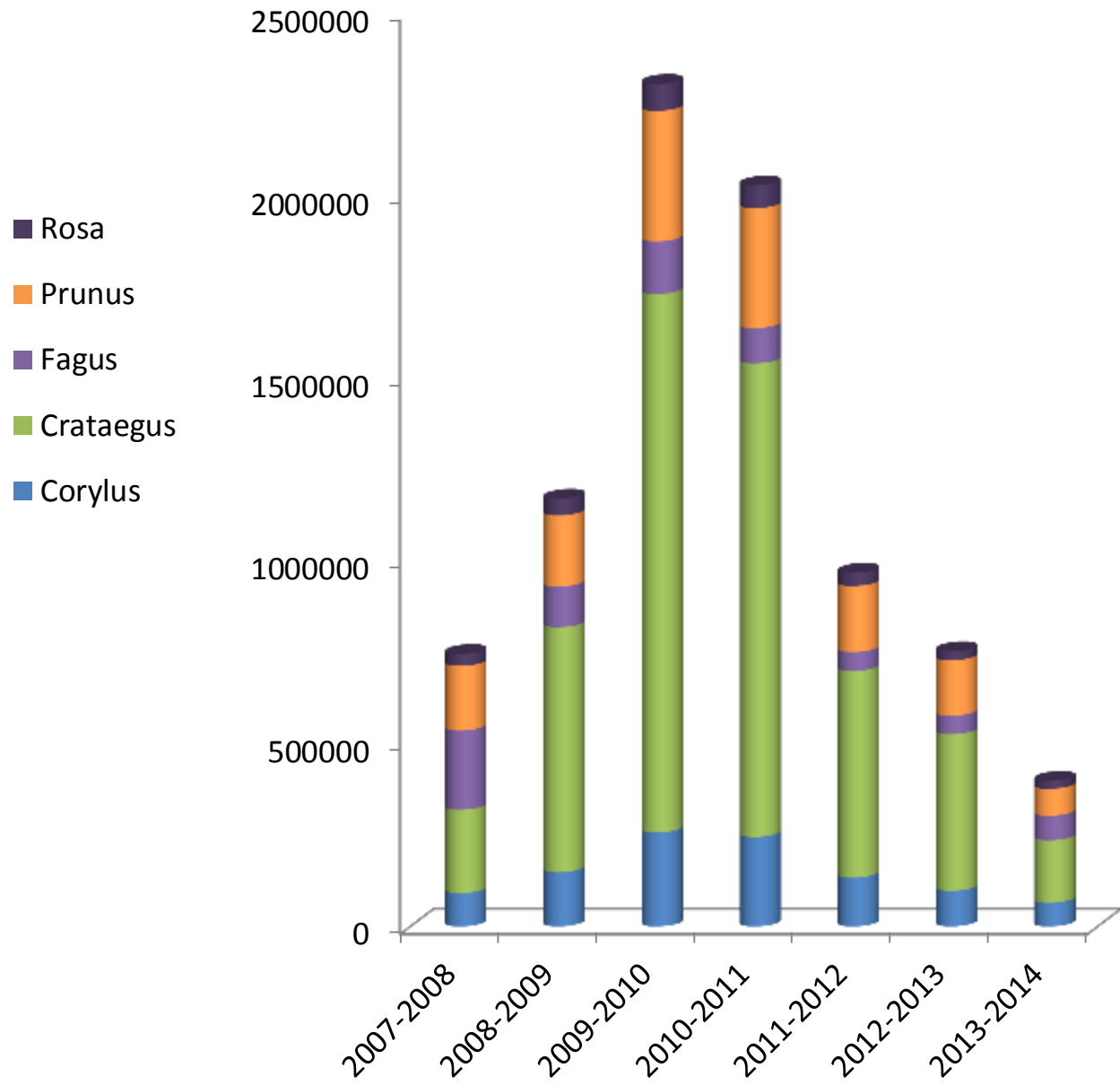
### Total Sales (No Trees)





### Total Sales (No Trees)







What about alternative species ?



**Enquiries for 4,500,000 Sitka spruce since Jan 2014 !**

**Alternative Species sown 2013, Invererne**



An aerial photograph of a Sitka spruce nursery. The image shows numerous rows of young, vibrant green spruce trees planted in a field. The trees are arranged in neat, parallel lines, with a narrow dirt path or aisle running through the center of the rows. The overall scene is a lush, green landscape of young forest plants.

Lets grow more sitka.

we did grow more sitka.....



.....nobody wanted it.





Risk for the grower is currently too great;

- Control measures should be appropriate and adaptable
- Legislation must be rational and must capture all
- Buyers need to value 'UK grown stock', specify it as a requirement and understand the definition

The key factor for nursery *resilience* is **stability**.

Without a stable, predictable market, home-grown production in the UK is *not sustainable*

Imports will continue to pose a risk to biosecurity.

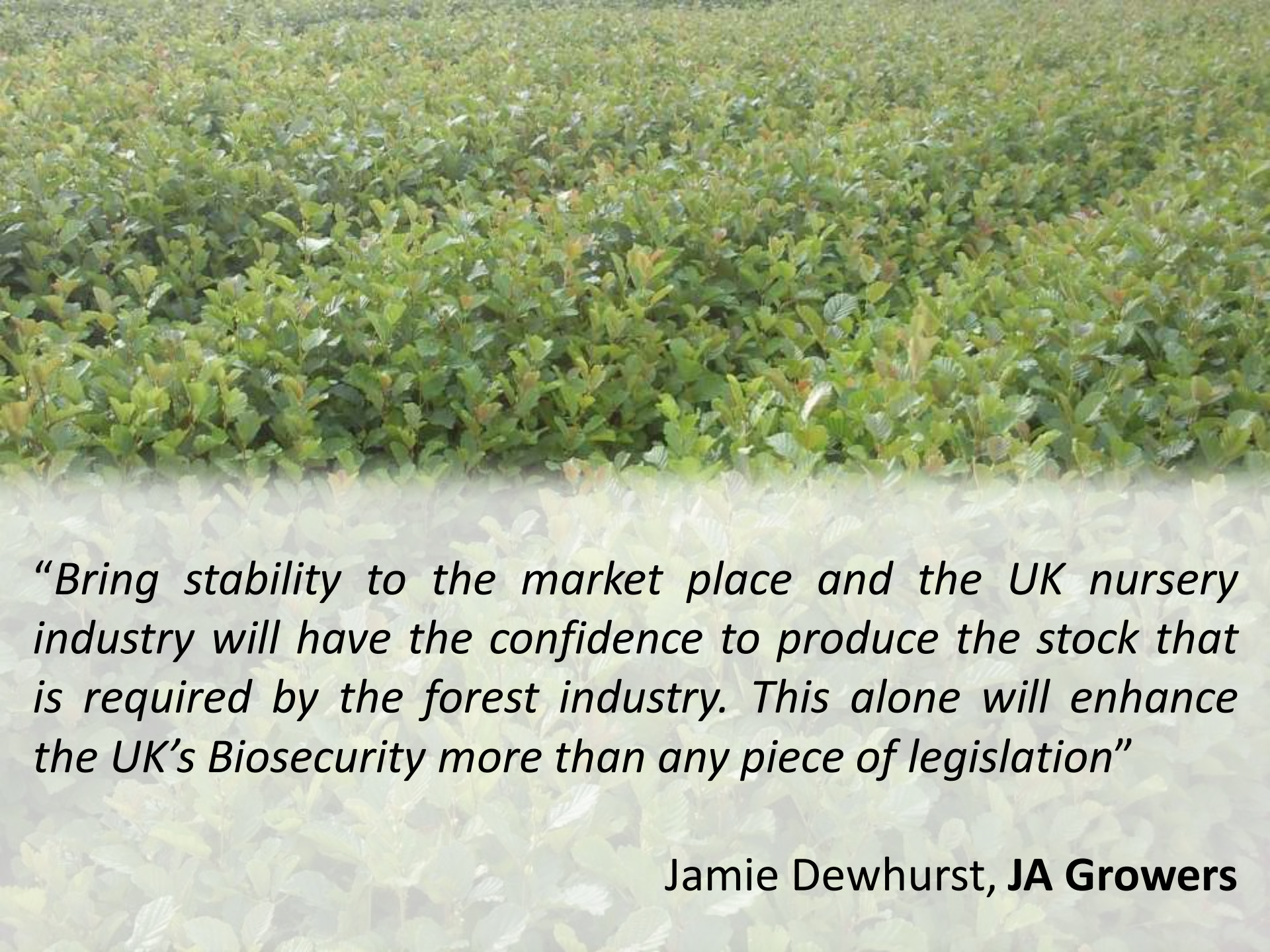


*“Long Term planning is absolutely essential to the forestry industry. The short term, stop start, agricultural mindset of RDP/SRDP is not compatible with constructive and practical forest strategy.”*

Harry Frew. **Cheviot Trees.**







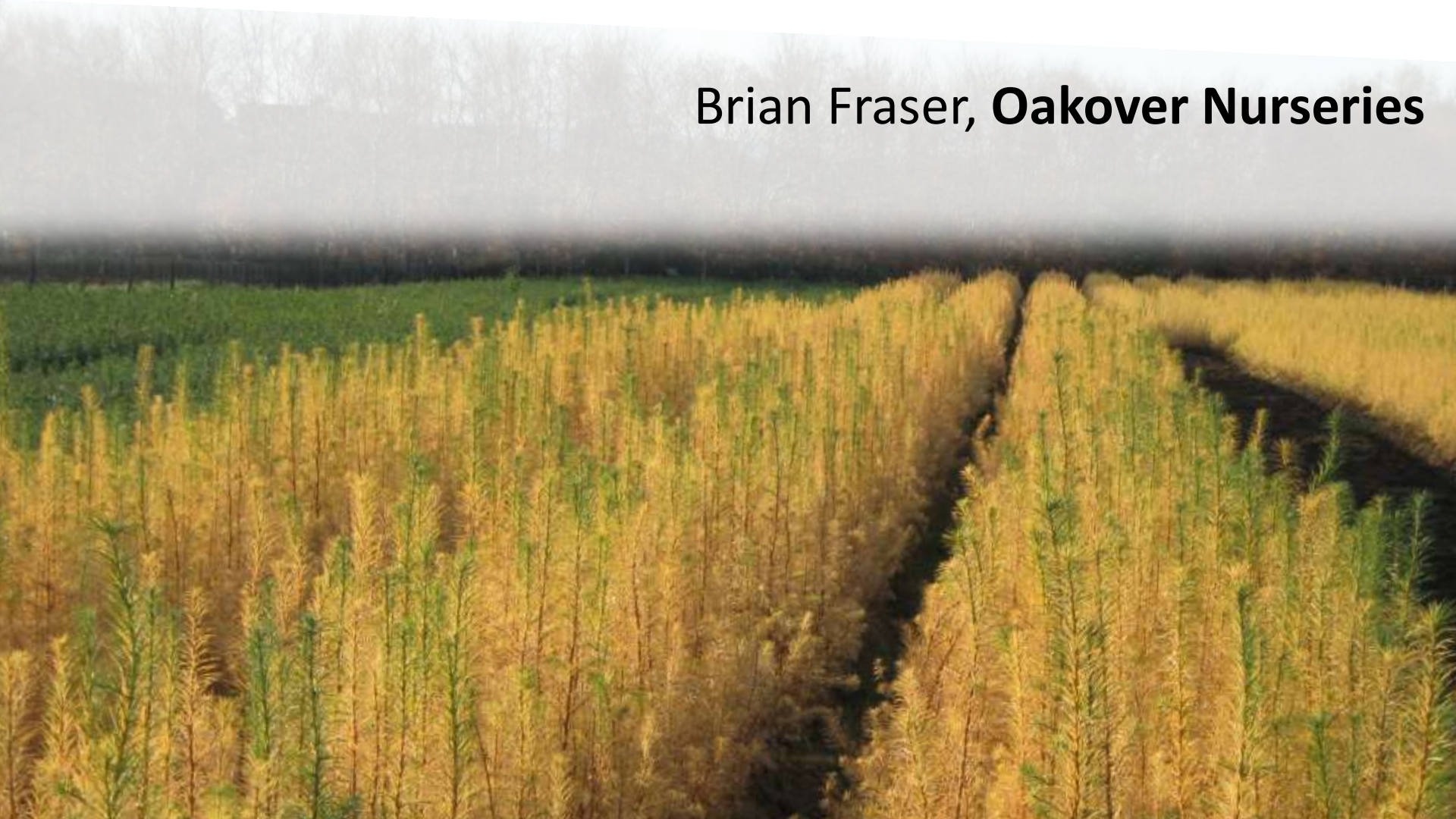
*“Bring stability to the market place and the UK nursery industry will have the confidence to produce the stock that is required by the forest industry. This alone will enhance the UK’s Biosecurity more than any piece of legislation”*

**Jamie Dewhurst, JA Growers**



*“UK Biosecurity and UK grown plants go ‘hand in hand’. UK nurseries need confidence in a continuing and stable UK market so UK nurseries can continue and invest to supply”.*

Brian Fraser, **Oakover Nurseries**





*“Stability is important in any industry but where forest nurseries are producing a perishable product 1-3 years before use, stability and predictability are the lifeblood of survivability and essential for good biosecurity.”*

Grant Murray, **Alba Trees**







*“Long term financial stability is key for forest health; short term financial strangulation will only ensure that tree health will suffer”*

Helen Richardson, **Forestart**



*“There is plenty of spare capacity within UK forest nurseries to grow everything that the industry requires. All we need is for customers to consistently specify “UK grown” and, within a couple of years, there will be no imports. Let’s do it!”*

**Charles Beaumont – Trees Please Ltd**





# Thank You.

Matt Hommel MSc MICFor  
[matt@christie-elite.co.uk](mailto:matt@christie-elite.co.uk)

[www.christie-elite.co.uk](http://www.christie-elite.co.uk)