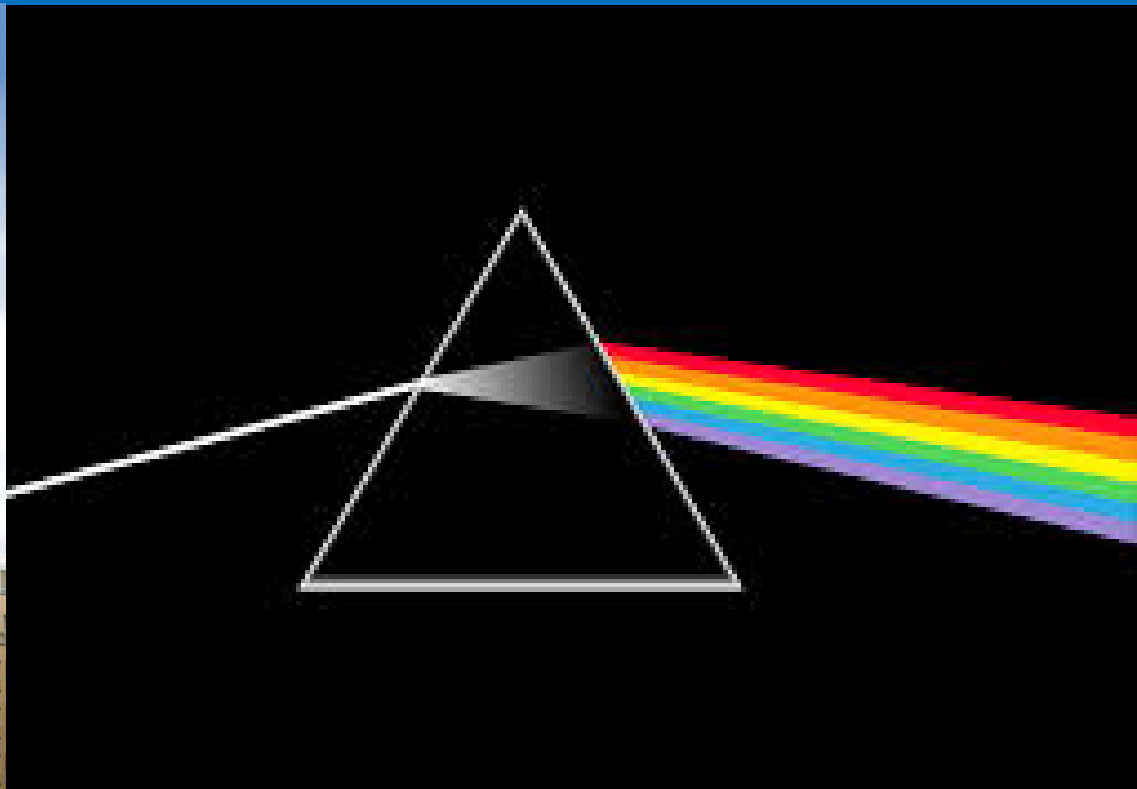


Birmingham: The UK's First Biophilic City



Nick Grayson
Climate Change & Sustainability Manager,



Birmingham: The UK's First Biophilic City

"We the mayors and governors of the world's leading cities. ask you to recognise that the future of our globe will be won or lost in the cities of the world."

Copenhagen Climate Change communiqué,
December 2009



MEA &
NATURAL
CAPITAL
2005

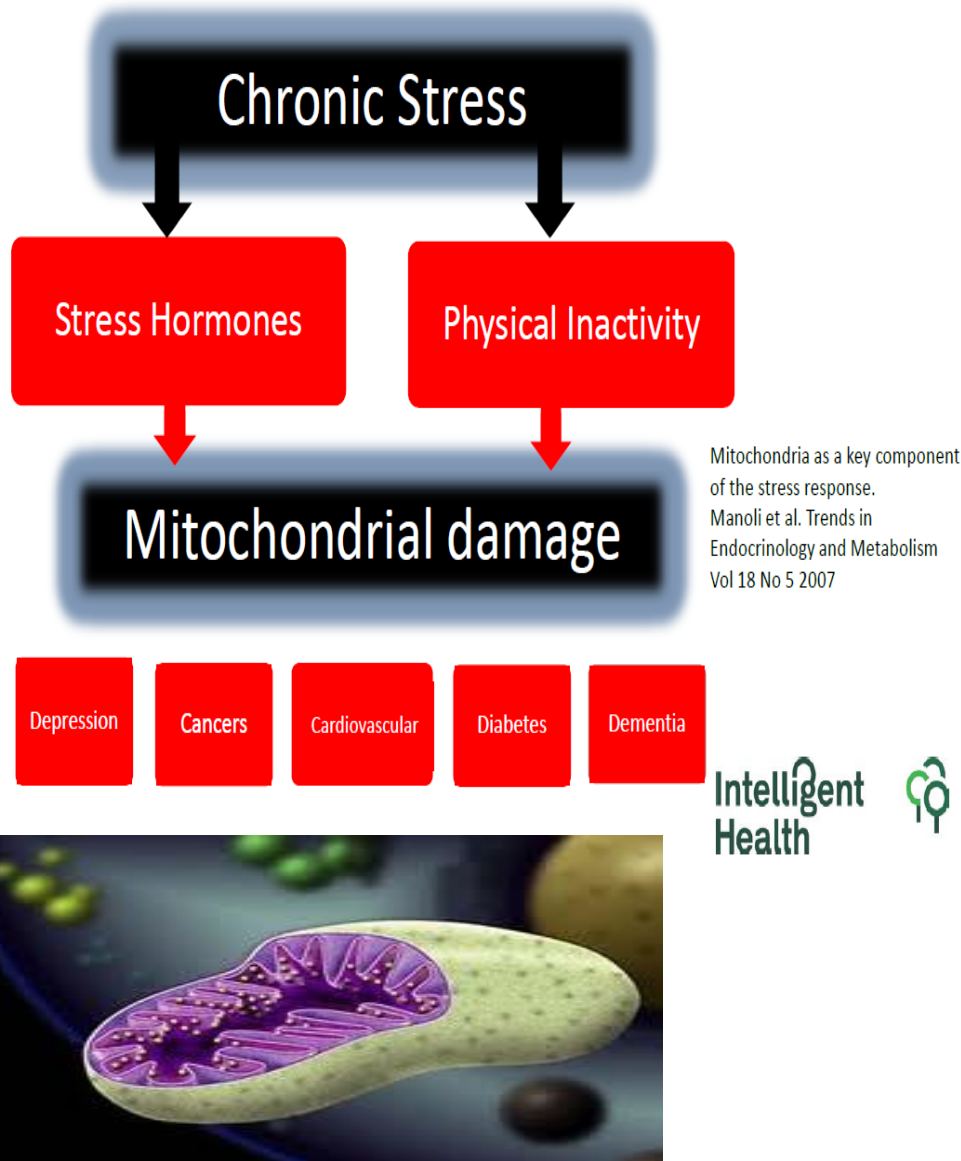


STERN 1% GDP
GLOBAL 2006

UK Statistics 2012

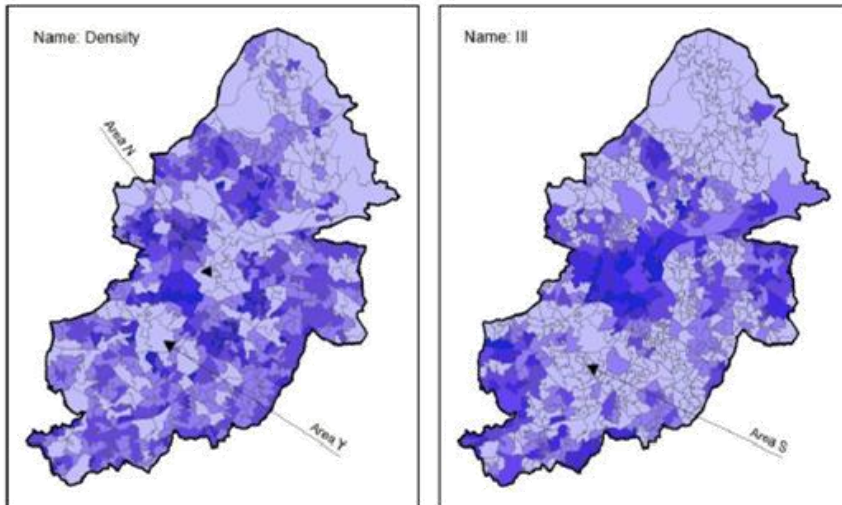
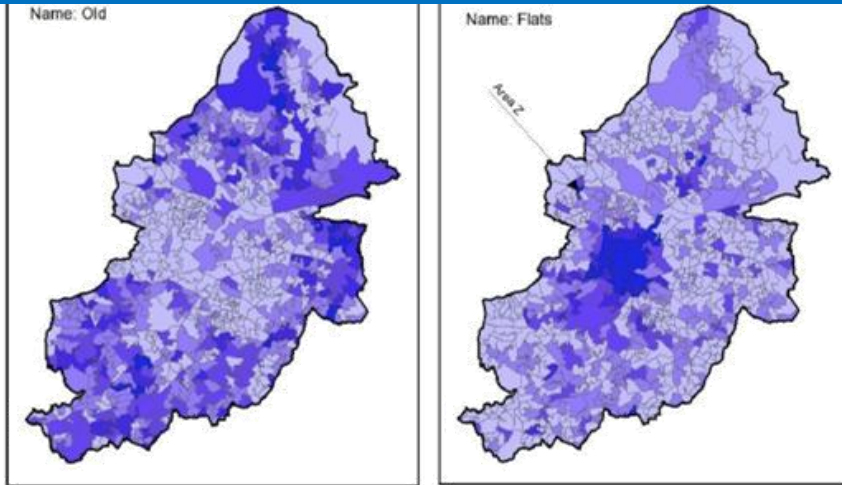
- % UK classified as urban?
- % of UK population living as urban ?
- % urban areas not built form?
- % total of England built on?
- % GHG & natural resources – global cities?

Birmingham: The UK's First Biophilic City

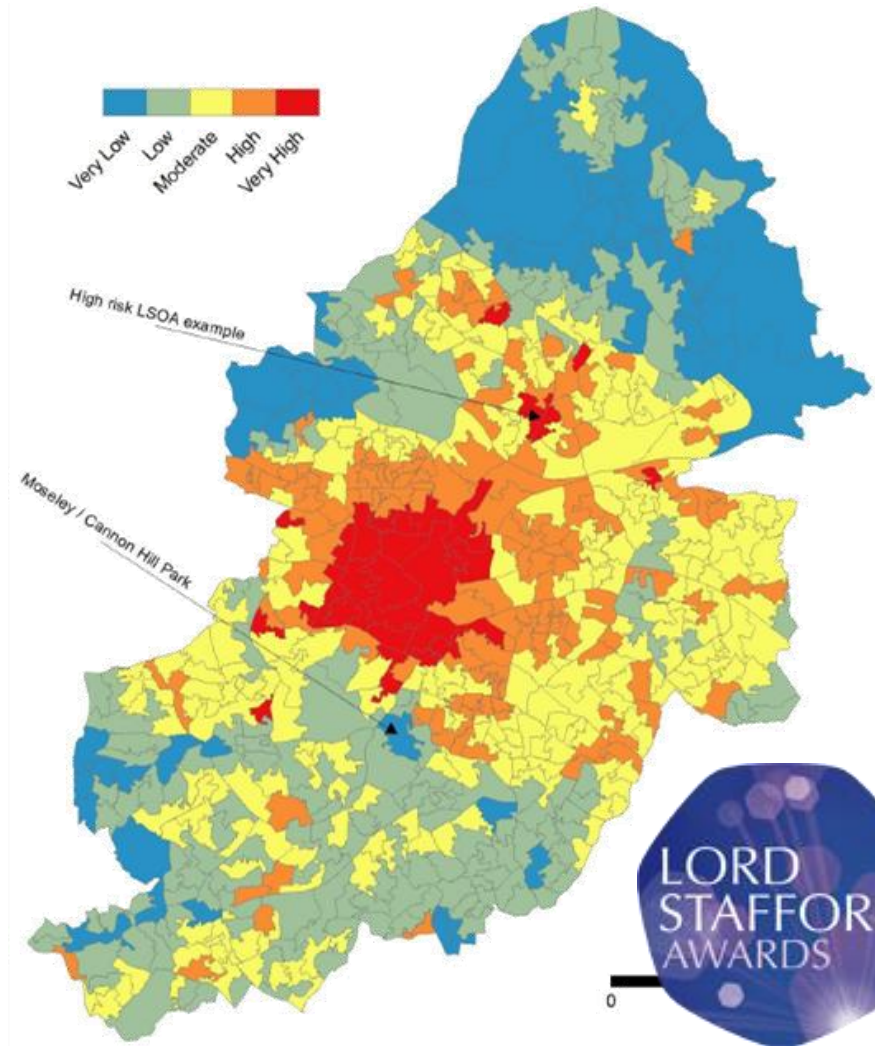


Non-communicable diseases represent a new frontier in the fight to improve global health. Worldwide, the increase in such diseases means that they are now responsible for more deaths than all other causes combined. Secretary General United Nations 2011

Birmingham: The UK's First Biophilic City



BUCCANEER PROJECT

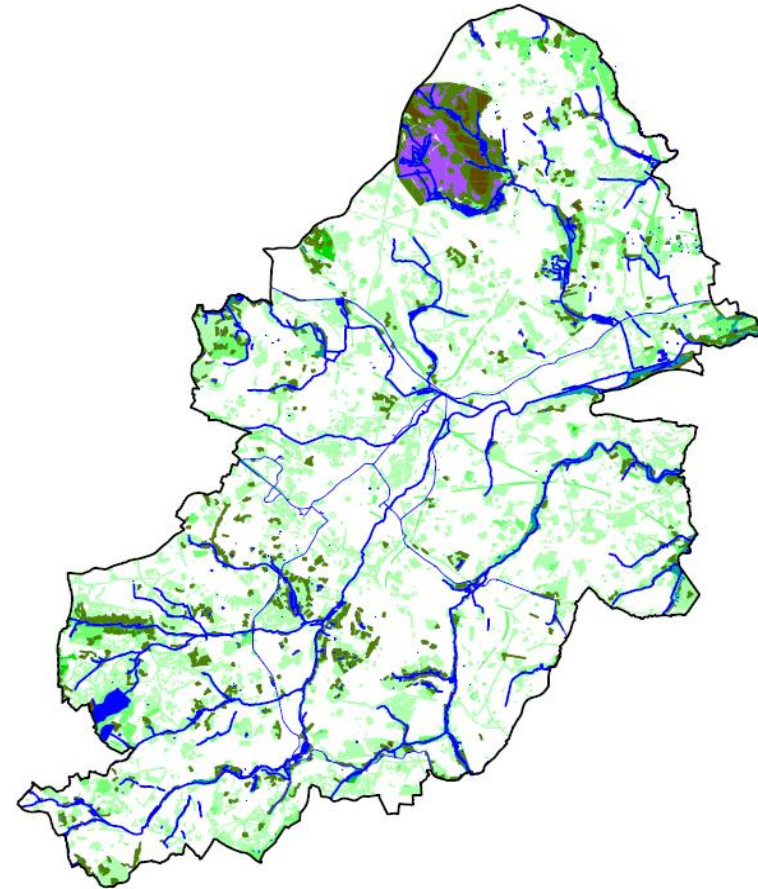
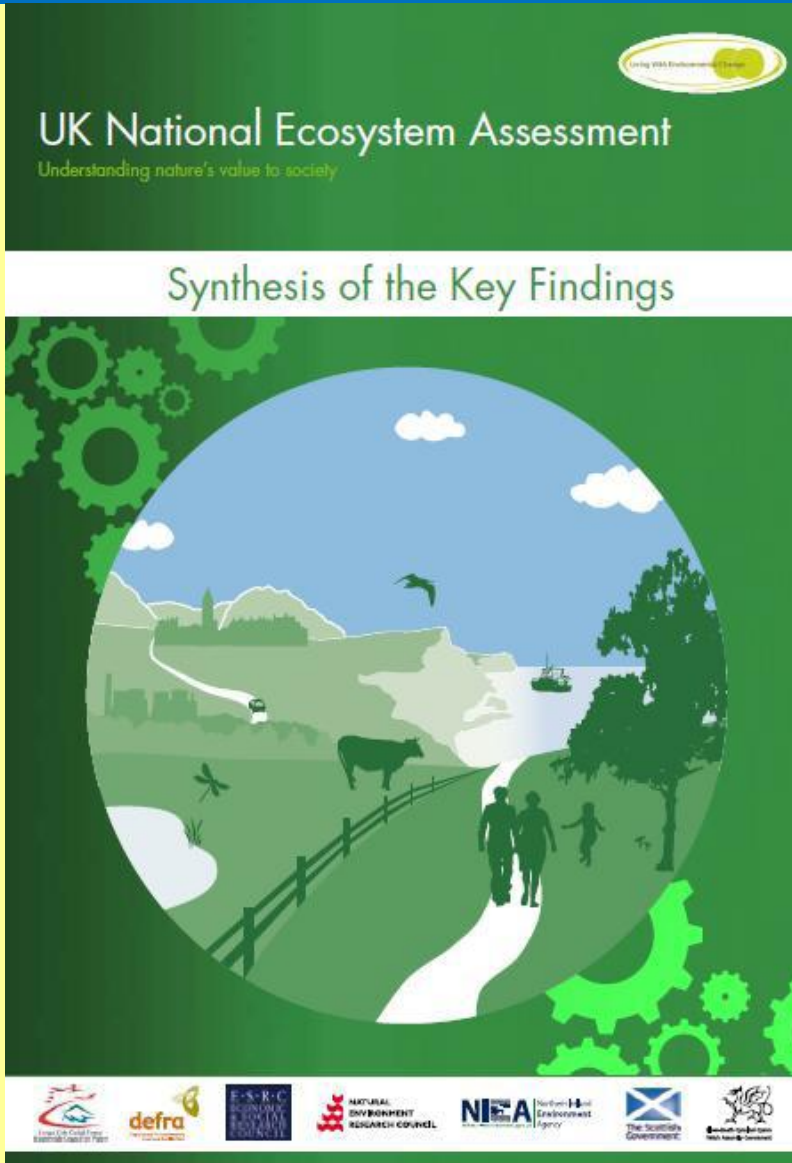


Birmingham: The UK's First Biophilic City

“The UK NEA provides a comprehensive overview of the state of the natural environment in the UK and a new way of estimating our national wealth”

Foreword

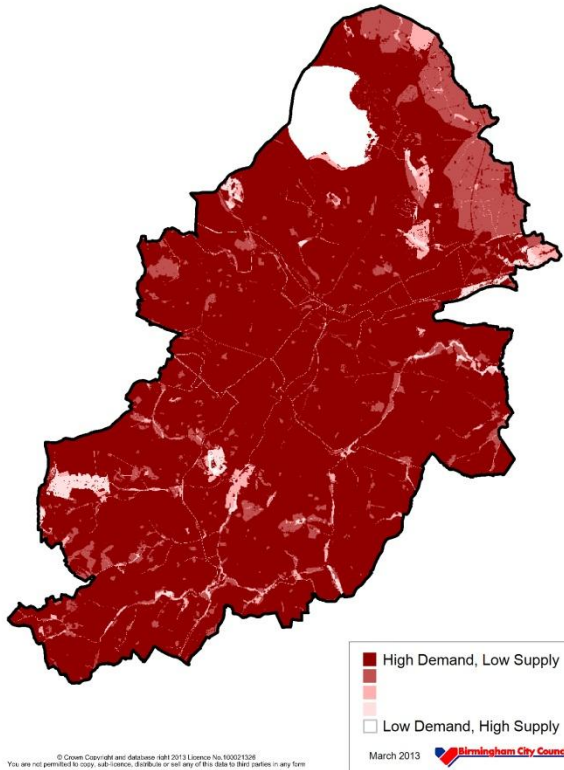
Lord Selbourne, 2011



Birmingham – a UK first

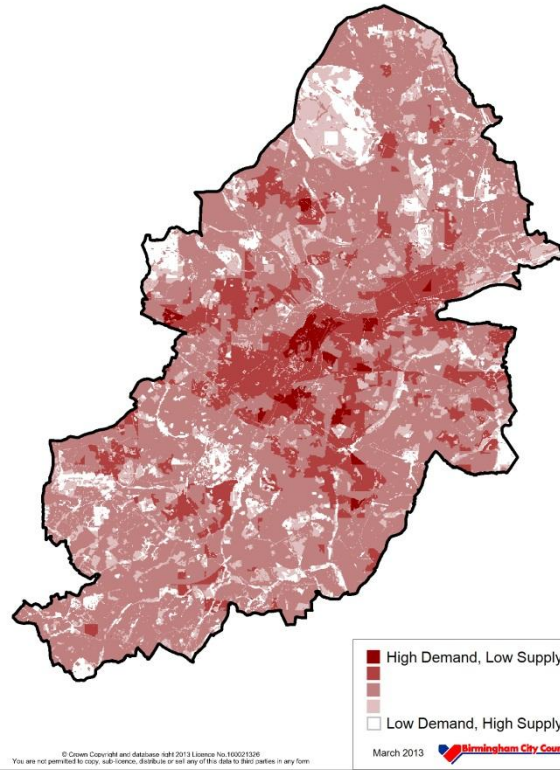
Birmingham: The UK's First Biophilic City

Biodiversity Services Supply and Demand map



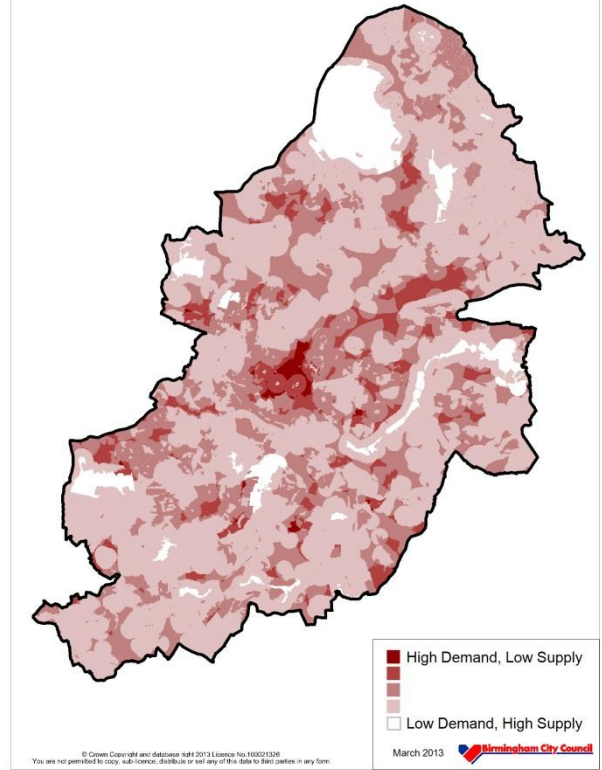
- Biodiversity
- Education

Local Climate Services Supply and Demand map



- * Local Climate
- * Aesthetics & mobility

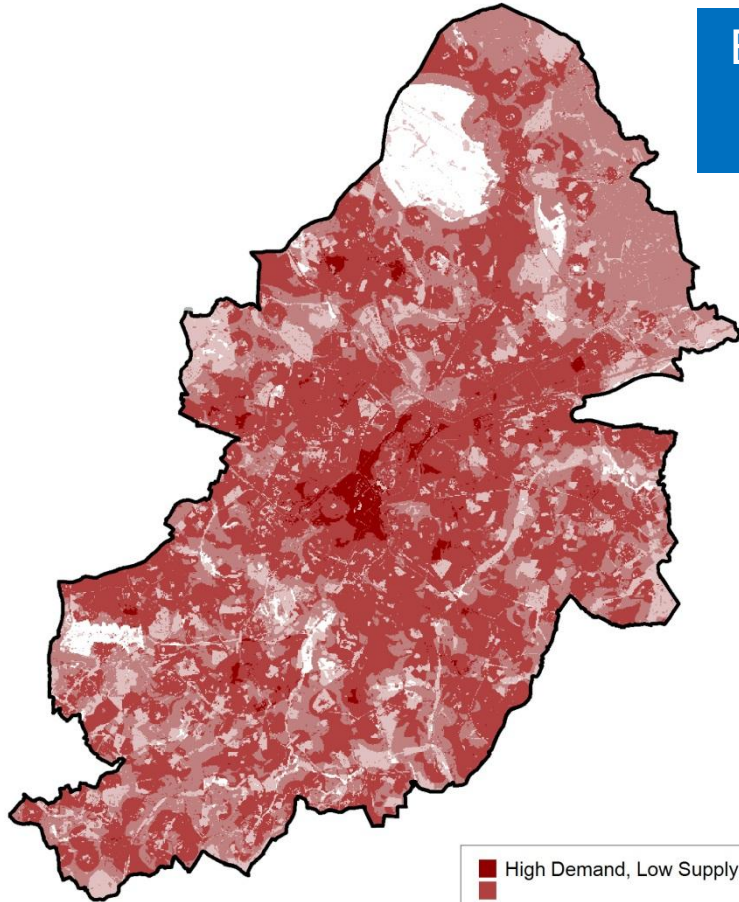
Recreation Services Supply and Demand map



- * Recreation
- * Flood risk

Birmingham: The UK's First Biophilic City

The Multi-layered Challenge map for Birmingham

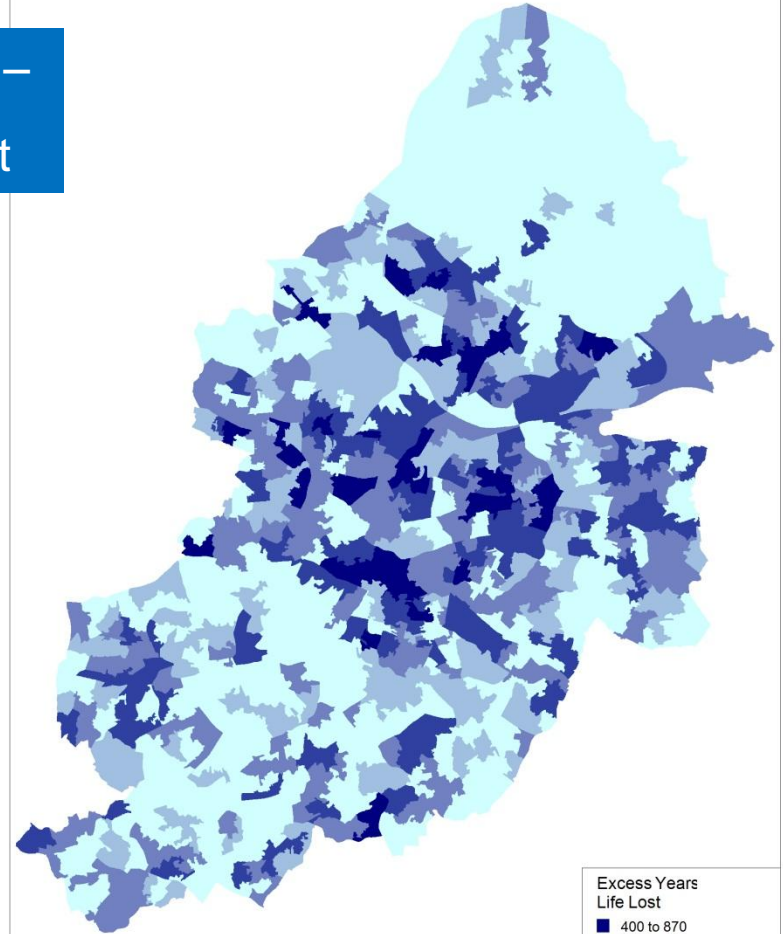


■ High Demand, Low Supply
■ Low Demand, High Supply

March 2013 

Birmingham –
a global first

Excess Years Life Lost at LSOA



Excess Years
Life Lost

■ 400 to 870
■ 200 to 400
■ 100 to 200
■ 0 to 100
■ -400 to 0

© Crown Copyright and database right 2013 Licence No. 100021326
You are not permitted to copy, sub-licence, distribute or sell any of this data to third parties in any form

Principle	Outcome
An Adapted City	Retain City's top ranking for adaptation
	<ul style="list-style-type: none"> •Ensure all future growth is adapted •Trees for cooling and thermal insulation •Green roofs, walls and street canyon research
The City's Blue Network	Adopt water sensitive urban design
	<ul style="list-style-type: none"> •Integrated SuDS, flood and water management solutions •Blueprint for enhance walking and cycling offer •Blue Corridor/ network policy with Canal Rivers Trust
A Healthy City	Adopt Natural Health Improvement Zones (NHIZ)
	<ul style="list-style-type: none"> •Integrate the delivery of health and green living spaces •Continue to extend the 'Be Active' offer •Public Health as key partners in Planning
The City's Productive Landscapes	Embrace urban forestry and urban food growing
	<ul style="list-style-type: none"> •Continue to promote allotments •Facilitate community food growing and orchards •Promote the multiple benefits of urban forestry
The City's Greenways	Change gear- to a walking and cycling City
	<ul style="list-style-type: none"> •Create walkable/ cyclable neighbourhoods •Citywide signed routes linked to public transport •Link healthcare activities and prevention programmes
The City's Ecosystem	Birmingham as a Biophilic City
	<ul style="list-style-type: none"> • City to adopt an ecosystem services approach •Partners to lead on District Nature Improvement Area plans •Birmingham to join global Biophilic Cities Network
The City's Green Living Spaces	Birmingham an international City of Green Living Spaces
	<ul style="list-style-type: none"> •Adopt the 7 principles across Planning Framework •Green Infrastructure and Adaptation Delivery Group

Birmingham: The UK's First Biophilic City

BiophilicCities - Cities that achieve a deep affinity with nature



Birmingham: The UK's First Biophilic City

Biophilic City Framework 3- for Urban Prosperity, Health, and Beauty

Acting as true pioneers, cities who embrace a global Biophilic City accreditation program will reduce global pressures on humanitarian and environmental limits.

Doing so will create an economy producing durable economic prosperity and community well being within those limits and consistent with the principles of the earth's biosphere and primary economy – our regenerative life support system.

Who globally addresses global humanitarian issues? **The United Nations**

Who globally addresses global environmental issues? **The United Nations**

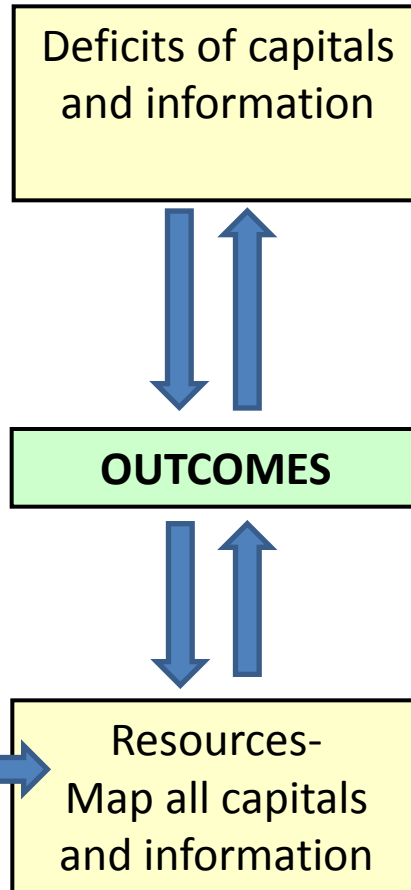


Birmingham: The UK's First Biophilic City

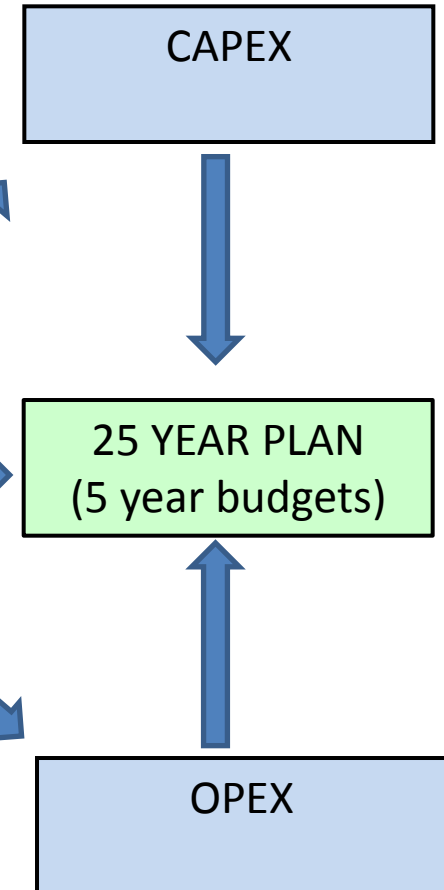
Who is Responsible?



What is the equation?



How is it delivered?



DRAFT BIRMINGHAM NATURAL CAPITAL CITY PLAN

Birmingham: The UK's First Biophilic City



**NATURAL
CAPITAL
CITY**