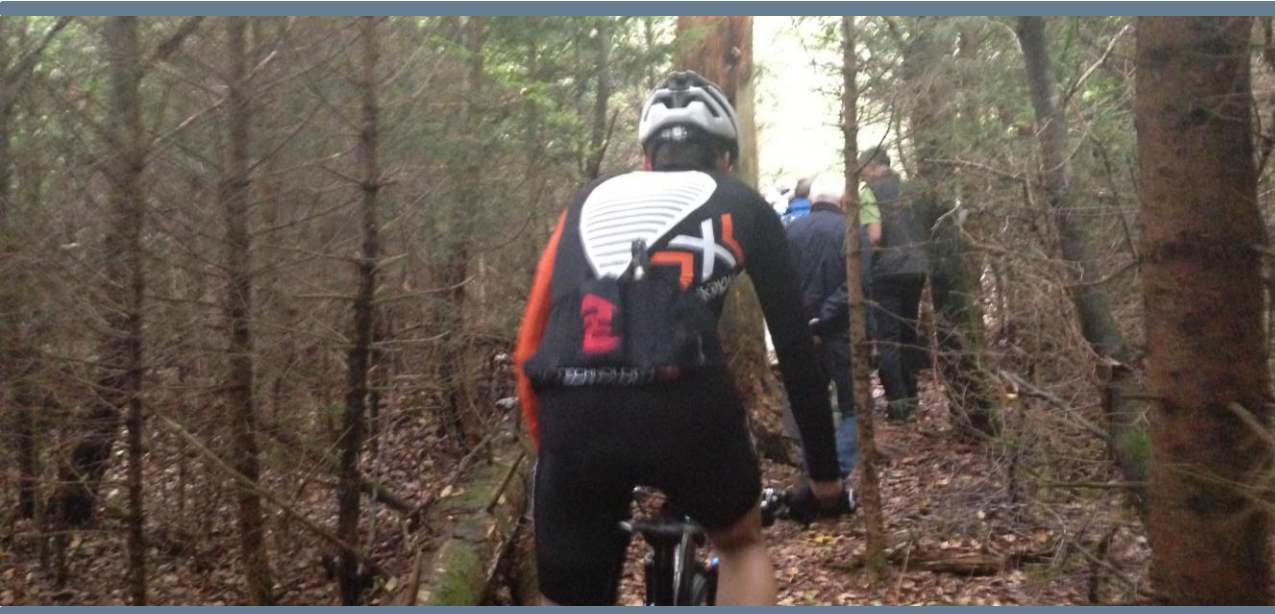




Bern University
of Applied Sciences



The Swiss case of neighbourwoods

A paradigm change in Urban Woodland Management

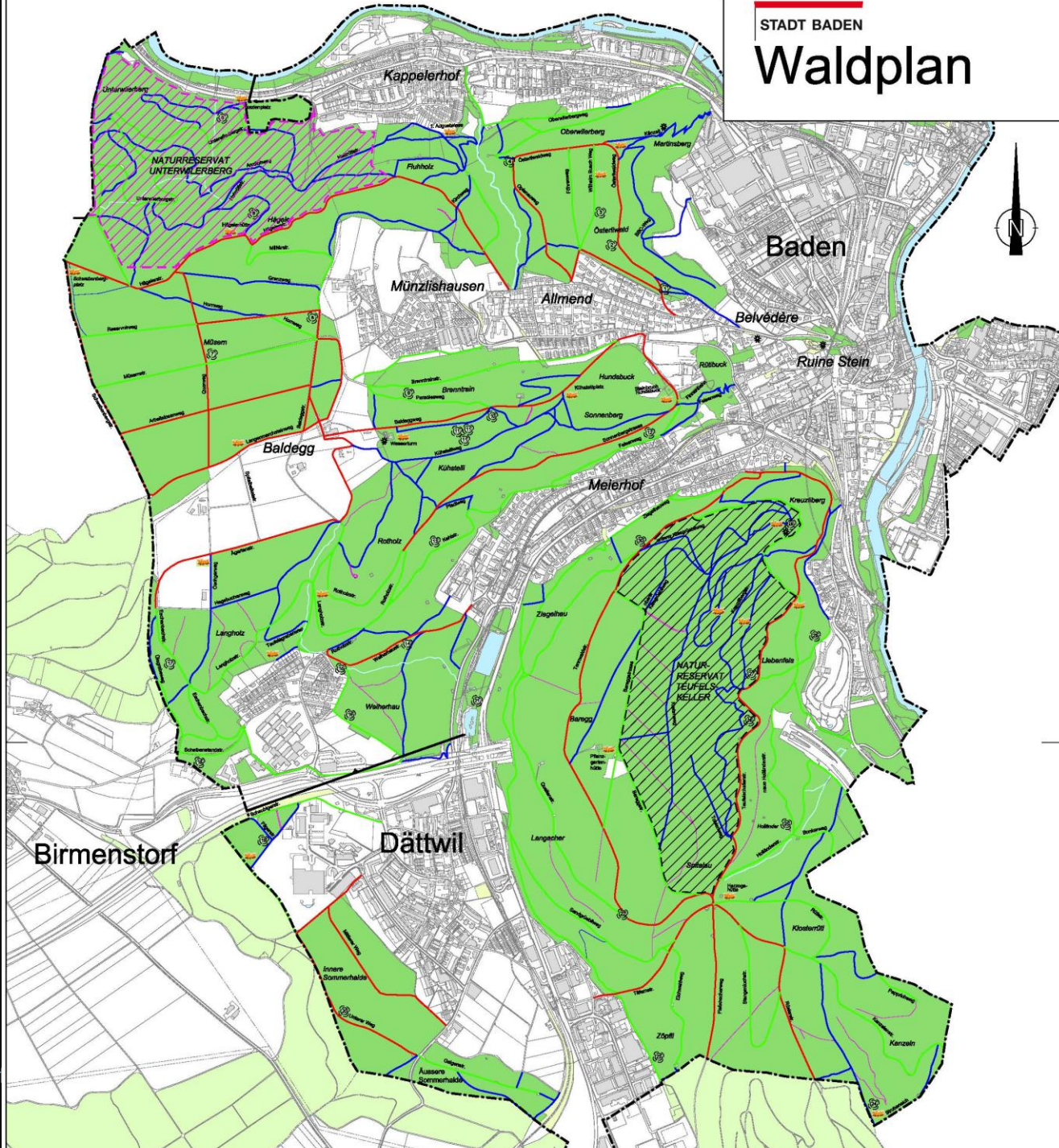


Dr Bianca Baerlocher

- ▶ School of Agricultural, Forest and Food Sciences HAFL



Waldplan





Preview

- ▶ What are the challenges in Swiss Urban Forest?
- ▶ Why a paradigmatic change?
 - ▶ Sustainability and Governance
- ▶ Urban Forest Governance
- ▶ SUNWoods: first steps

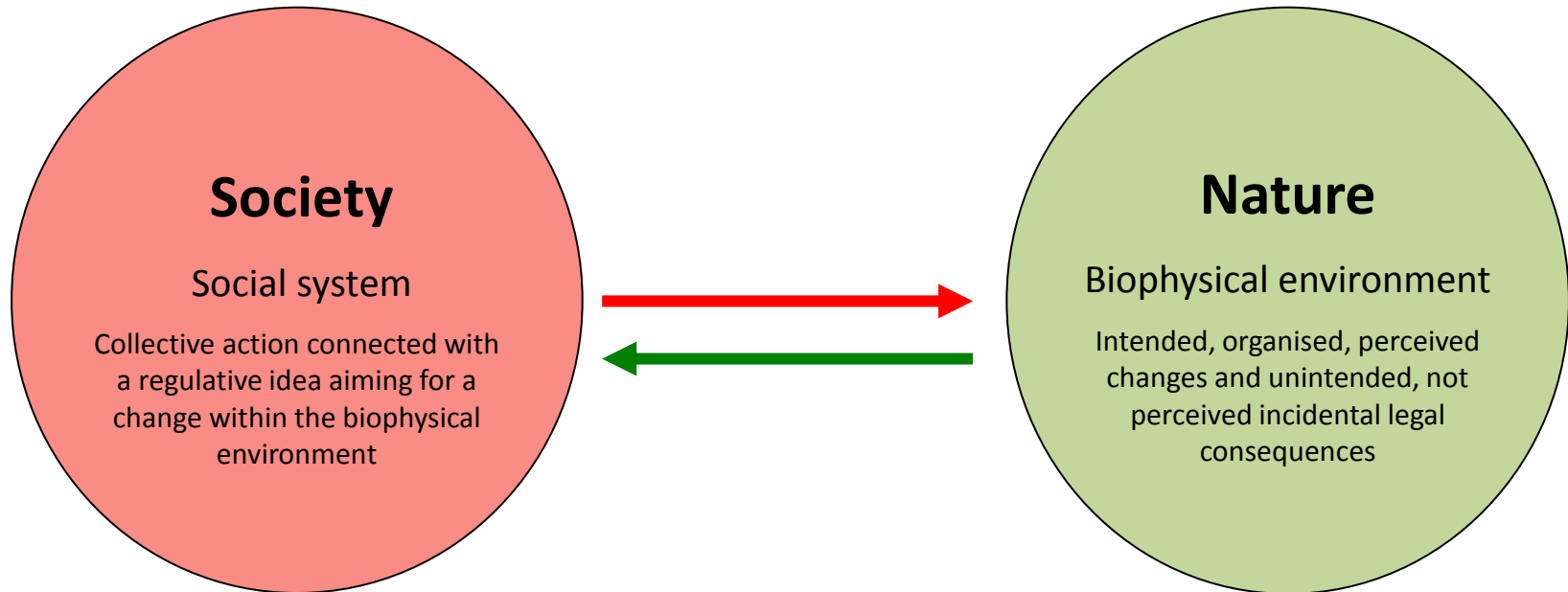
Challenges in Swiss Urban Forests



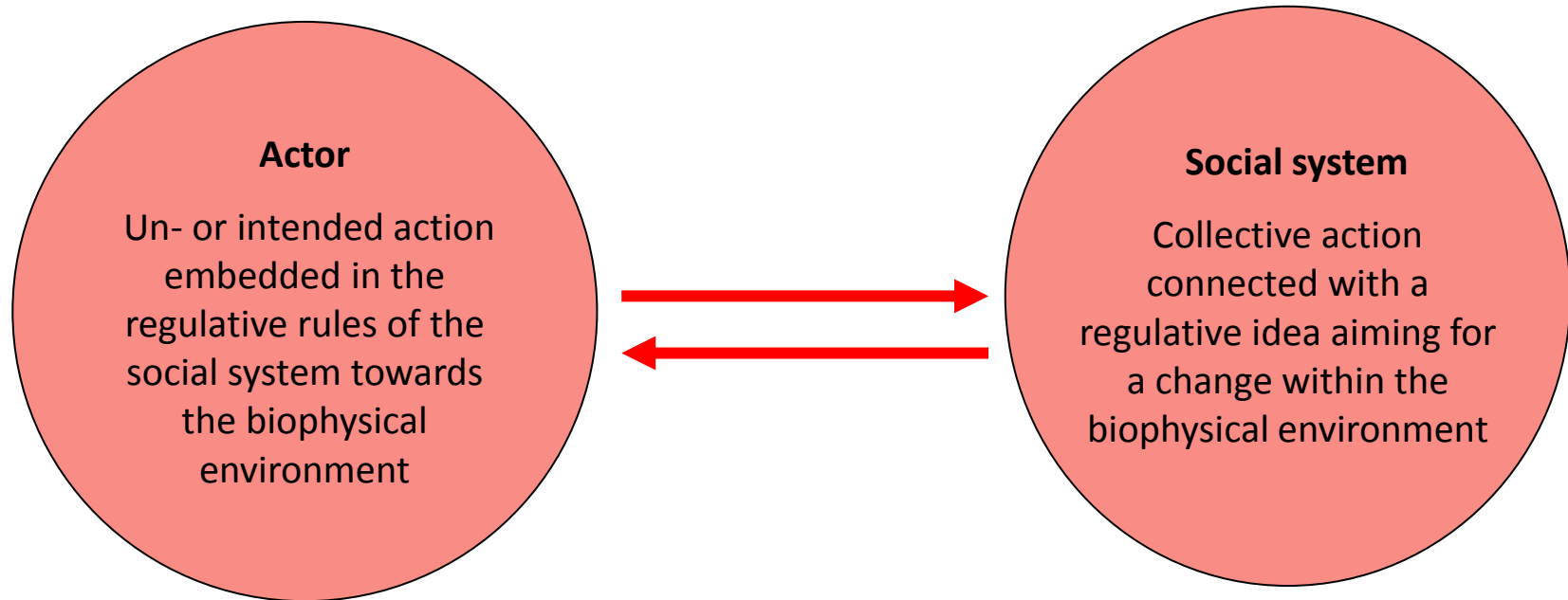
Paradigm Change

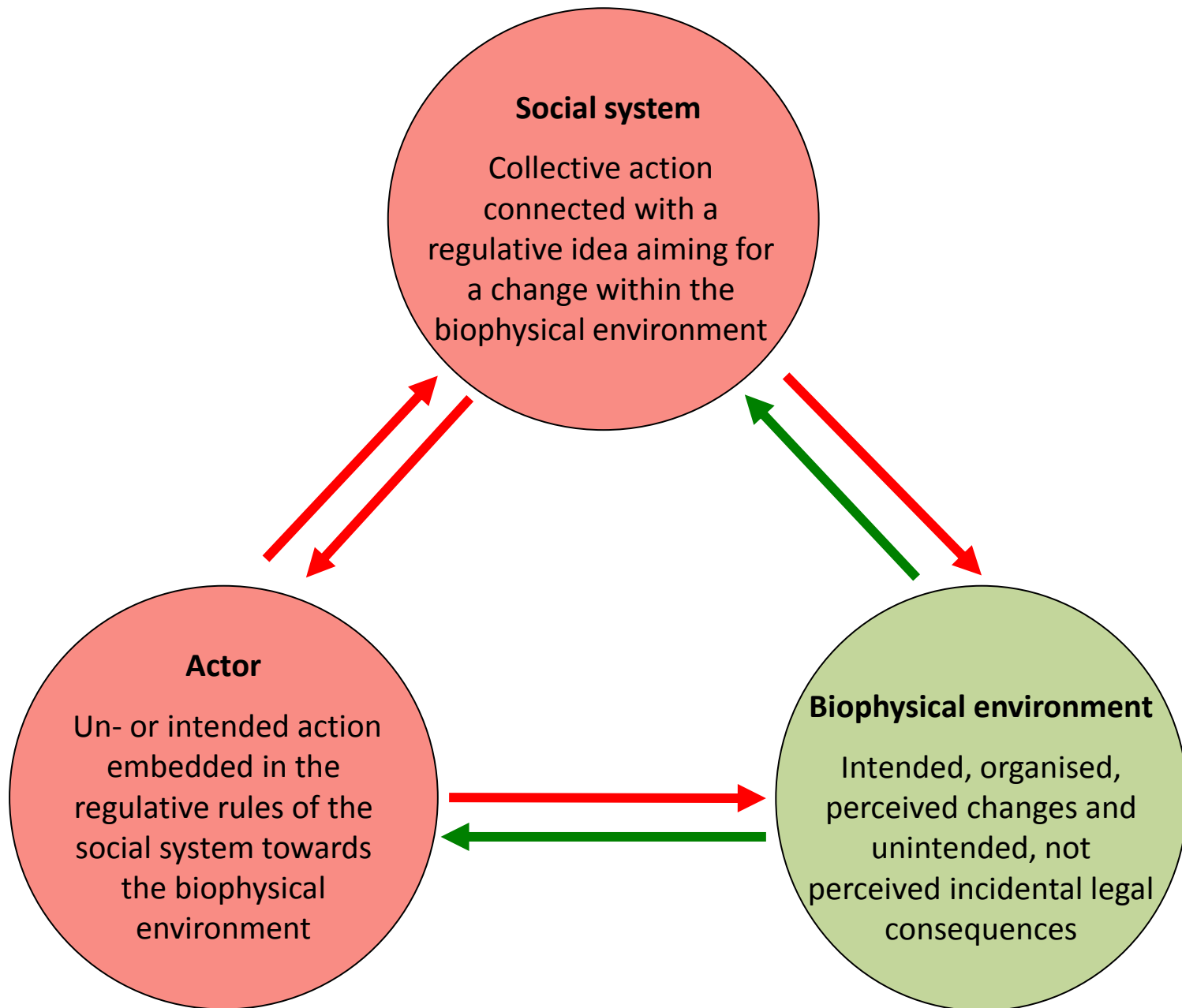
Sustainability and Governance

Sustainability



Governance





Urban Forest Governance

Main category	Sub category	Urban Forestry
Context		
Individual actor (user)	Condition, position, role model, behaviour	Trees, forest, people power, ownership, mental model
Social system (governance system)	Collective action: e.g. coordination of action, interactions, cooperations, organisation, discourses, institutions, politics, policies	Primary stakeholders, other stakeholders, partnerships, power analysis, type of institutional resource regimes
	Regulative idea and its policy	Policies, planning and regulation, ownership, access and use rights
	Resources	Funding (taxes etc.), delivery mechanisms
	Processes	Discourses, participation, engagement, conflict management, monitoring and evaluation
Natural resources (resource system)	Type of use: ecosystem services and processes	
Consequences of action (outcomes)	Changes at individual and social level and in the biophysical system	Output of planning processes, impact of results, outcome in social and natural context
Knowledge	Scientific findings and practical experiences, transfer of knowledge	Knowledge and information

Table: Social-ecological regimes concept meets urban forestry governance framework (state of discussion)
 (Baerlocher 2013 + Lawrence et al. 2013)

SUNWoods

First steps

Level	Explanation	Products
I	Rough characterisation of the case on the basis of written documents (without personal contact).	List of references; short overview with main characteristics and problem orientation of the case
II	Basic description of the case based on simple application of the meta-framework combined with one selected first interview.	List of references; description of the case based on the analytical meta-framework; interview assessment
III	Basic description of the case based on simple application of the meta-framework combined with several interviews concerning different perspectives.	List of references; description of the case based on the analytical meta-framework; interview assessment; first stakeholder approach; special reports
IV	Detailed description of the case and approaching of detailed aspects together with involved stakeholders (starting point of participatory process)	List of references; detailed description of the case based on the analytical meta-framework; various output
V	Detailed description of the case and approaching of detailed aspects together with involved stakeholders by finishing the process.	List of references; detailed description of the case based on the analytical meta-framework; various output

Table: Levels of engagement in the participatory process SUNWoods

References

- ▶ Baerlocher, B. (2013) *Natur und soziales Handeln: Ein sozialtheoretisches Konzept für die Nachhaltigkeitsforschung*. Campus Verlag, Frankfurt.
- ▶ Lawrence, A., Vreese, R. de, Johnston, M., Konijnendijk van den Bosch, Cecil C. & Sanesi, G. (2013) Urban forest governance: Towards a framework for comparing approaches. *Urban Forestry & Urban Greening* 12 (4), 464–473.